



Greener ICU

The Green Intensive Care: From Environmental Hotspot to Action, *N. Hunfeld, J. C. Diehl, S. Van Der Zee, D. Gommers, E. M. van Raaij*

Moving Environmental Sustainability from the Fringe to the Centre Ground in Critical Care, *J. Parry-Jones, H. Baid*

Green ICU-4Ps: It Is Not An Option To Not Accomplish It, *I. S. Gabiña, S. P. Martínez, F. G. Vidal*

Call for a Green ICU, *M. Ostermann*

Carbon Footprint in ICU: A New Meaningful Outcome in Research Trials, *M. Bernat, E. Hammad, L. Zieleskiewicz, M. Leone*

Intravenous Fluids in Critically Ill Patients: When Less is Better, *O. R. Pérez-Nieto, D. Cuéllar-Mendoza, C. U. Santillán-Ramírez, L. M. Méndez-Martínez, E. Deloya-Tomas, É. I. Zamarrón-López*

Current Airway Management During Anaesthesia - The STARGATE Study, *V. Russotto, F. Collino, C. Sansovini, M. Muraccini, M. Francesconi, P. Caironi*

Medical Errors in the Preanalytical Phase of Blood Gases Test, *J. S. Sánchez-Díaz, K. G. Peniche-Moguel, J. M. Terán-Soto, E. A. Martínez-Rodríguez, F. J. López-Pérez*



Jean-Louis Vincent

Editor-in-Chief
ICU Management & Practice
Professor
Department of Intensive Care
Erasme Hospital
Université libre de Bruxelles
Brussels, Belgium

JLVincent@icu-management.org

🐦 ICU_Management

Greener ICU

Intensive care units are essential in providing life-saving care to critically ill patients. However, ICUs can have an environmental impact. Approximately 5% of worldwide anthropogenic greenhouse gases result from healthcare activities.

ICUs use significant energy to power equipment, ventilators, monitoring systems, and other life-support devices. They also consume substantial amounts of water while providing patient care, cleaning, and sanitation. ICUs also generate significant medical waste. All these lead to environmental pollution and water contamination.

It is important to mitigate the environmental impact of ICUs. This can be achieved through energy-efficient technologies, sustainable building practices, waste reduction and recycling, and optimal water management. ICUs must increase their focus on sustainable practices to minimise the environmental footprint of medical equipment and supplies. Implementing energy-saving measures to reduce energy consumption, utilising renewable energy sources, implementing efficient waste reduction strategies, improving inventory management, setting up recycling programmes, promoting water-efficient practices, minimising the use of hazardous chemicals and choosing safer alternatives, implementing proper chemical storage, handling, and disposal protocols, educating staff about the importance of responsible chemical management, incorporating sustainable design principles when constructing or renovating ICU facilities, engaging with sustainability organisations, healthcare networks, and regulatory bodies to exchange best practices, and tracking and monitoring energy consumption, water usage, waste generation, and other environmental metrics are essential. By implementing these measures, ICUs can contribute to a greener, more environmentally friendly healthcare system.

In this issue, our contributors discuss strategies on how critical care can reduce its environmental impact, aspects related to research, education and clinical practice and the importance of implementing environmentally sustainable strategies in critical care.

As always, if you would like to get in touch, please email JLVincent@icu-management.org.

Jean-Louis Vincent

GREENER ICU

- 106 The Green Intensive Care: From Environmental Hotspot to Action**
Nicole Hunfeld, Jan Carel Diehl, Sophie Van Der Zee, Diederik Gommers, Erik M van Raaij
 Together we must reduce the impact of the healthcare sector and shift towards a circular economy. This paper describes the shift of three ICU environmental hotspots: gloves, gowns, and CRRT bags.
- 110 Moving Environmental Sustainability from the Fringe to the Centre Ground in Critical Care**
Jack Parry-Jones, Heather Baid
 Critical care must recognise climate change is a medical emergency, necessitating us all to put sustainability at the forefront of our actions as a multidisciplinary team working together in the best interests of patients, the environment and resources.
- 114 Green ICU-4Ps: It Is Not An Option To Not Accomplish It**
Irene Salinas Gabiña, Sonia Pajares Martínez, Federico Gordo Vidal
 The critically ill patient should be framed within sustainable medicine. This article proposes a simultaneous approach to sustainability in people, products, processes, and our planet.
- 122 Call for a Green ICU**
Marlies Ostermann
 Intensive care units are carbon hotspots. Clinical staff must be aware of greenhouse gas emissions and their impact and potential mitigations. This article summarises key points and initiatives to make this happen.
- 124 Carbon Footprint in ICU: A New Meaningful Outcome in Research Trials**
Matthieu Bernat, Emmanuelle Hammad, Laurent Zieleskiewicz, Marc Leone
 Reducing the carbon footprint in healthcare is a requirement for guaranteeing the best future for humanity. This article suggests that carbon footprint be assessed as a potential endpoint for future trials in critical care.

**IN EVERY
ISSUE**

101 EDITORIAL
 Greener ICU
Jean-Louis Vincent

138 AGENDA
 Upcoming events/courses/congresses

OTHER FEATURE ARTICLES

- 126 Intravenous Fluids in Critically Ill Patients: When Less is Better**
Orlando R. Pérez-Nieto, Daniela Cuéllar-Mendoza, Cristian U. Santillán-Ramírez, Lourdes M. Méndez-Martínez, Ernesto Deloya-Tomas, Éder I. Zamarrón-López
 While intravenous fluids have traditionally been a routine treatment for most critically ill patients, many severe pathologies now suggest a preference for conservative fluid therapy over liberal fluid administration.
- 132 Current Airway Management During Anaesthesia - The STARGATE Study**
Vincenzo Russotto, Francesca Collino, Chiara Sansovini, Massimo Muraccini, Marco Francesconi, Pietro Caironi
 An overview of the International observational sTudy on AiRway manaGement in operAting room and non-operaTing room anaEsthesia (STARGATE study) that will collect information on peri-intubation adverse events and airway management procedures in adult patients undergoing general anaesthesia.
- 135 Medical Errors in the Preanalytical Phase of Blood Gases Test**
Jesús Salvador Sánchez-Díaz, Karla Gabriela Peniche-Moguel, Juan Miguel Terán-Soto, Enrique Antonio Martínez-Rodríguez, Fernando Jaziel López-Pérez
 The preanalytical phase of the blood gases study is the most susceptible to errors, causing increased time and costs for patients and hospitals. Knowledge and training of the involved health personnel must be constant to improve results.

Editor-in-Chief

Prof Jean-Louis Vincent
Belgium

Editorial Board

Prof Antonio Artigas
Spain
Prof Jan Bakker
Netherlands
Prof Richard Beale
United Kingdom

Prof Jan De Waele
Belgium

Prof Bin Du
China

Prof Hans Flaatten
Norway

Prof Armand Girbes
Netherlands

Prof Theodoros Kyprianou
Cyprus

Prof Jeff Lipman
Australia

Prof Flavia Machado
Brazil

Prof John Marini
United States

Prof Paul E. Pepe
United States

Prof Paolo Pelosi
Italy

Dr Shirish Prayag
India

Dr Emma J. Ridley
Australia

Prof Gordon Rubenfeld
Canada

Dr Francesca Rubulotta
United Kingdom

Regional Ambassadors

Dr Adrian Wong
UK

Dr Audrey de Jong
France



Nicole Hunfeld

Clinical Pharmacologist
Department of Intensive Care
and Pharmacy
Erasmus MC University
Medical Center
Rotterdam, the Netherlands
n.hunfeld@erasmusmc.nl
@nicole_hunfeld
www.sustainablehospital.org



Jan Carel Diehl

Department of Industrial
Design
TU Delft
Delft, the Netherlands
j.c.Diehl@tudelft.nl
@jcdiehl



Sophie Van Der Zee

Erasmus School of Economics
& Erasmus School of Law
Erasmus University
Rotterdam, the Netherlands
vanderzee@ese.eur.nl
@SophieVanDerZee



Diederik Gommers

Department of Intensive Care
Erasmus MC University Medi-
cal Center
Rotterdam, the Netherlands
d.gommers@erasmusmc.nl



Erik M van Raaij

Rotterdam School of Manage-
ment and Erasmus School of
Health Policy and Manage-
ment
Erasmus University
Rotterdam, the Netherlands
eraaij@rsm.nl
@Erikvanraaij

Introduction

The healthcare sector is one of the most carbon-intensive sectors, contributing to 4.4% of global net greenhouse gas emissions and toxic air pollutants (Karlner et al. 2022). Around 71% of emissions are primarily derived from the production, transport, and disposal of medical products

The Green Intensive Care: From Environmental Hotspot to Action

Together we must reduce the impact of the healthcare sector and shift towards a circular economy. This paper describes the shift of three ICU environmental hotspots: gloves, gowns, and CRRT bags.

such as pharmaceuticals, medical devices, personal protective equipment (PPE), hospital equipment, and instruments. The Netherlands is above the global average, with 7% of its national footprint associated with the healthcare sector (Gupta Strategists 2022). Hospital care results per year in 3.8 kilotons of extracted materials, 17.6 kilotons of CO₂ emissions and 4803 kilotons of waste (Steenmeijer et al. 2022). Zooming in on the waste, this consists of 15% hazardous materials (e.g. blood and infected materials) and 85% general hospital waste, of which 55% is plastics (WHO 2018). In the last decade, there was a tendency to increase efficiency and prevention of iatrogenic infection. Therefore, there was a shift to single-use products, especially in the operating room and the intensive unit (ICU). In these departments, most of the (plastic) waste is generated (Hunfeld et al. 2022).

Given the current climate crisis, we must start working towards more holistic approaches to reduce the impact of the healthcare sector and shift towards a circular economy (Hinrichs-Krapels et al. 2022). We discuss three relevant approaches. First, a circular economy contains three core principles: (1) design out waste and pollution, (2) keep products and materials in use for as long as possible, and (3) regenerate natural systems (Ellen MacArthur Foundation 2020). While simple in theory, there are many complexities and trade-offs when shifting towards circular practices. Second, the 7 Pillars of the Circular Economy framework (materials, energy, water, biodiversity, human society

and culture, health and well-being, and generating value) can be used as a holistic lens to map or to describe sustainability issues and to identify environmental hotspots (Kirchherr et al. 2017). Third, based on these environmental issues and hotspots, the 10R strategies can be used as a starting point for circular interventions by healthcare staff (Reike et al. 2018). The 10Rs represent Refuse, Rethink, Reduce, Reuse, Repair, Refurbish, Remanufacture, Repurpose, Recycle and Recover. Refuse (meaning not buying/using the product in the first place) is the strategy with the highest impact in the hierarchy of circular interventions, while Recover (generating energy from incineration of waste) represents the strategy with the lowest impact.

In the transition from a linear to a circular system, knowledge about the environmental impact of products and actions is needed in order to determine environmental hotspots and to use the 10R strategies. This knowledge can be obtained through so-called Life Cycle Assessments (LCA) or a Material Flow Analysis (MFA). LCAs involve the analysis of the environmental impact of natural resource extraction, manufacturing, packaging, transport, use/reuse, and recycling/waste disposal of certain products or processes (McGain et al. 2020). LCAs related to intensive care medicine have been performed for reusable central venous catheter insertion kits and septic ICU patients in the United States and Australia (McGain et al. 2020; McGain et al. 2018). An LCA of all the activities occurring within the entire ICU would be a considerable undertaking, though

not impossible. Another method is the Material Flow Analysis (MFA). An MFA provides a quantitative understanding of all the goods and waste flows that enter and leave the system. It can be used to manage resources and waste flows (Brunner and Rechberger 2004; Allesch and Brunner 2015). We are the first ICU that applied an MFA to identify environmental hotspots in the hospital context at the department level. We have recently published the results of this MFA (Hunfeld et al. 2022). This MFA provides the necessary information for intensive care in its desired transition from a linear to a circular system, with detailed insights into materials mass, carbon footprint, agricultural land occupation and water usage related to the products that are used in the intensive care unit.

From the MFA, we identified multiple environmental hotspots. This paper will describe how the intensive care of Erasmus MC improved its sustainability by changing three environmental hotspots: gloves, gowns and CRRT bags and their packaging.

From Hotspots to Three Cases

To approach the transition towards a circular hospital from a holistic view, we set up a multidisciplinary consortium comprising partners from an academic hospital (Erasmus MC), a technical university (TU Delft) and a university of social sciences (Erasmus University Rotterdam). Within the circular economy, co-creation and collaboration are key and ideally, co-creation and collaboration involve the whole value chain (Figure 1). Our consortium is built around the hospital value chain and serves an extensive network (from materials producers to waste processors). The relevance of this value chain is described previously (Hinrichs-Krapels et

al. 2022) and concludes that if we want to move towards more radical and long-term shifts in designing interventions towards transitions, a quadruple-helix approach will be necessary. This will involve cross-disciplinary and cross-sectoral research and implementation across (1) industry, (2) government, (3) academia, and (4) the public. Together with master students from Industrial Design Engineering and Behavioural Economics, we examined how to improve three environmental hotspots. We will describe these cases in more depth below. The case description will follow the following items: environmental hotspot analysis, R approach (Figure 2), redesign, behavioural change (if applicable) and supply chain implications.

The final phase of a case consists of implementation of the redesigned product in the ICU. In our setting, this is guided by the green team of the ICU. This green team is vital to harnessing employee expertise, motivating, and finding new and better ways to transition (Trent et al. 2023). Our ICU green team is a diverse team, representing the ICU medical profession by nurses, doctors, and pharmacists, together with expertise from infection prevention, logistics and procurement, and project management leadership.

Gloves

Hotspot analysis

The largest number of individual units procured for the ICU are nitrile gloves, with an average of around 108 gloves being used daily per patient treated in the ICU. Their aggregated weight also makes up more than 12% of the total weight of disposable medical material used. From the impact assessment, nitrile was highlighted as the material with the highest impact intensity in terms of carbon footprint (9.3 kg CO₂-eq/

kg nitrile) and water usage (0.5 m³ water/kg nitrile) (Circular Intensive Care Unit Erasmus MC, Report Metabolic 2021). Given the high environmental impact of gloves, we aimed to redesign their use.

R-approach

Refuse and Reduce will result in the largest impact. This requires a change in the behaviour of the medical staff. In our ICU, it is currently common to wear gloves for all procedures. We recently started a new campaign, together with the infection prevention department, showing medical staff when gloves are needed. For example, in a non-isolation patient's room: only wear gloves when dealing with excreta (e.g., bodily waste including faeces, urine, and mucus), medication (administration of chemotherapy), and blood. To refuse and reduce the use of gloves, we combined this campaign with a newly designed glove box. Rethink is the other R-strategy related to the gloves. Both the packaging (short-term solution) and the material (nitrile, long-term solution) require a more sustainable redesign.

Redesign

This research and design project addressed the problem from three different perspectives: user-centred, product-centred, and supply-centred (vd Berg et al. 2022). The users of the gloves were observed during their work to identify the problems that occur. The product was analysed by trying to take out the gloves one by one from the cardboard dispenser. Due to poor design and packaging, the gloves are difficult to dispense one by one. By analysing the waste, it became clear that around 6% of the gloves end up in the waste unused. The project resulted in a redesign of the current glove dispenser with a focus on five aspects: 1) dispensing one glove at a time, 2) dispensing gloves at the cuff, according to infection prevention rules, 3) vertical position of the box, which is more ergonomic to the user, 4) the use of colours on the dispenser for different sizes, so nurses will see at a glance which size gloves the box contains, and 5) a small V-shaped opening which makes the

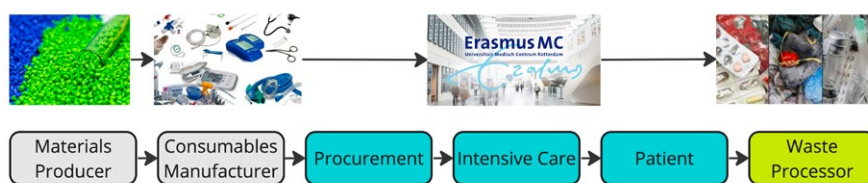


Figure 1. Current linear value chain of medical consumables in the hospital care sector

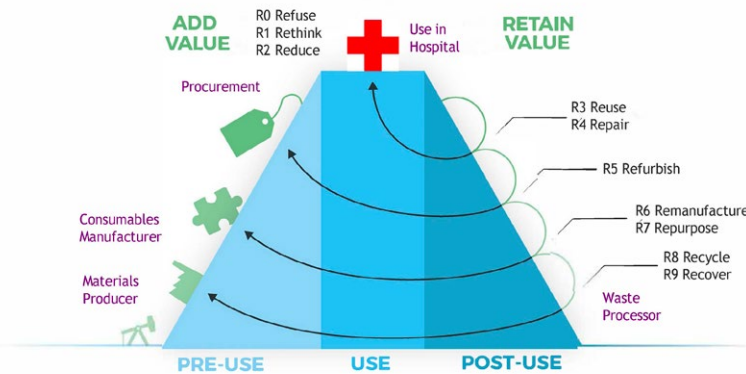


Figure 2. The 10R Circular Economy strategies depicted along the value chain (purple) for medical consumables

undesirable behaviour of placing gloves back almost impossible. The final glove box design can provide benefits for multiple stakeholders within the healthcare system and also outside the ICU.

Supply chain implications

The case highlighted two important interfaces with the supply chain: First of all, in line with the above analysis, a redesign and manufacturing of a new type of dispenser and a better approach to how the dispensers are filled (stacked instead of bunched up). At the same time, another interface with the supply chain is to ask the market to design and manufacture (at scale) different types of gloves consisting of material with less environmental impact (e.g. a different type of nitrile [Hunfeld et al. 2022]).

Gowns

Hotspot analysis

Our MFA showed that 16 single-use gowns per ICU patient per day are used. Of all personal protective equipment, gowns were the largest contributor to CO₂ emissions during the first six months of the COVID-19 pandemic (Rizan et al. 2021), which means that a reduction in gown usage is an important step towards a circular hospital.

R-approach

We aimed to Reduce gown usage in two distinctive ways: a transition from wearing gowns to wearing aprons when working with non-isolation patients and - when working with these non-isolation patients - to only wear aprons when dealing with

excreta and blood. To achieve this goal, behavioural change in ICU personnel was needed.

Redesign

The case of gowns did not need a redesign. There are aprons and washable gowns available on the market.

Behavioural change

To facilitate behavioural change, we combined a policy change and informational campaign with nudging. To examine the effect of two different nudges on gown usage amongst ICU personnel, we ran a field experiment at Erasmus MC (consisting of 4 ICU Units: A, B, C and D). Specifically, we tested the effect of a visual prime and social norm nudge on apron usage. Upon the introduction of the policy change, for 1.5 weeks, we counted how many aprons were used during the day shift in non-isolation rooms across the ICU (i.e., baseline measurement). Next, we introduced a visual prompt sticker and prime (i.e., banner) in Units A and B and a social norm sticker in Units C and D. The social norm sticker stated that 81% of ICU personnel from a comparable hospital preferred to act sustainably and only wear an apron when needed. To examine the effectiveness of our interventions, for a period of 1.5 weeks, we counted how many aprons were used. To examine the effect of each nudge independently, we distinguished between Units A and B and Units C and D. We found an 8 percent point decrease in apron usage between the pre-intervention

measurement and the post-intervention measurement in the visual prime condition. Unexpectedly, the social norms stickers led to a 6 percent point increase in apron usage. Neither differences were statistically significant. We will continue our search for ways to encourage more sustainable behaviour amongst ICU employees. We have conducted a series of interviews with ICU personnel to involve the employees themselves in this behavioural transition. Another step forward would be to move from Reduce to Reuse by moving from single-use aprons to washable aprons.

Supply chain implications

This case shows multiple implications for the supply chain. One implication is a switch from single-use gowns to less polluting washable gowns (Vozoola et al. 2018). For Erasmus MC, this requires a tender because of the academic hospital status. This takes time, so Erasmus MC decided to switch to aprons in the meantime. These aprons fulfil the infection prevention rules regarding non-isolation patients. However, gowns are needed for isolation patients. At the moment, we don't have information about the environmental impact of aprons compared to washable gowns. This information is needed before we can set out a future policy: switching to washable gowns for all patients or the use of washable gowns for isolation patients only?

CRRT bags and their packaging

Hotspot analysis

One of the low-hanging fruit cases are the continuous renal replacement therapy (CRRT) bags with their packaging. On average, the ICU of Erasmus MC uses 30,000 5-litre bags (Fresenius Medical, 's-Hertogenbosch, the Netherlands) per year. This adds up to 3,600 kg of plastic waste. Since this is a clean waste stream that can be separated easily from other waste streams, we asked the waste processor if it was possible to create a separate logistics recycle stream for the CRRT packaging and the bags. The waste processor analysed the type of plastic, and both the bag and the packaging appeared to be a pure polypropylene polymer suitable for

high-quality recycling. The connectors at the bottom of the bag have to be removed because they consist of a different type of plastic, unsuitable for this type of recycling.

R-approach

For this hotspot, the Recycling of empty CRRT bags (without connectors) and their packaging is a fitting strategy.

Redesign

In this case, there was no need to redesign the product itself. However, a special cutting tool was designed to split the connectors from the bag. Also, a box was made to store empty bags and packaging. This box is attached to the CRRT trolley that is parked outside the patient's room containing new CRRT bags. The ICU nurses are asked to put the CRRT bag packaging in this box as well as the empty bags after having removed the connectors.

Supply chain implications

This case also highlighted two interfaces with the supply chain. First of all, a reverse, closed-loop supply chain needs to be developed to recycle the packaging. Second, collaboration with the supplier needs to

be initiated to redesign the CRRT bag in such a way that the connectors can be easily cut off/torn off to enable recycling of the CRRT bag itself. It also stresses the importance of the use of pure plastics that can be recycled for both packaging and the product itself. This should be taken into account during tenders.

Summary: Lessons for the Future

Our three cases show that the transition towards circular intensive care requires a total value chain approach. Collaboration and co-creation with academic partners and industrial partners (manufacturers, suppliers, waste processors) and users (e.g. medical staff) is essential in the change towards more sustainable products, protocols and processes. From our experience, a case usually starts within our multidisciplinary green team (Bein and McGain 2023). After the green team has defined a new case, we collect data about how many products are used on an annual basis and we ask infection prevention specialists (part of our green team) for advice regarding the case and the planned intervention. With this information, a case is then redesigned within our consor-

tium and tested in the ICU. The final step involves the implementation of the newly designed case. This step requires a sharp focus on behaviour and communication within the ICU. Again, it is the green team that advises on the implementation and communication. With this strategy, we were able to implement many sustainable cases already. The involvement of procurement is key and in case of public procurement, alignment with the tendering calendar is an important factor to take into account. Finally, make sure that you can show data on the environmental and financial impact of a case. This helps medical staff change their behaviour.

Acknowledgements

We acknowledge Julia Pongratz, Lisanne van de Berg, Meyke Maanicus, Theo Post, and Tamarah Verhoog carrying out their master's project involving the cases described in this paper. We thank Focco Ottens (waste processor PreZero, Arnhem, the Netherlands) for the analysis of the CRRT bags.

Conflict of interest

None. ■

References

- Allesch A, Brunner P (2015) Material flow analysis as a decision support tool for waste management: a literature review. *J Ind Ecol.* 19:753-764.
- Bein T, McGain F (2023) Climate responsibilities in intensive care medicine—let's go green! An introduction to a new series in *Intensive Care Medicine.* *Intensive Care Med.* 49:62-64.
- Brunner P, Rechberger H (2004) *Practical handbook of material flow analysis.* Lewis Publishers, Washington DC.
- Circular Intensive Care Unit Erasmus MC. Report Metabolic (2021). Available on request.
- Ellen MacArthur Foundation (2020) *What is a Circular Economy? A Framework for an Economy that is Restorative and Regenerative.* Available at <https://ellenmacarthurfoundation.org/topics/circular-economy-introduction/overview>.
- Hinrichs-Krapels S, Diehl JC, Hunfeld N, van Raaij E (2022) Towards sustainability for medical devices and consumables: the radical and incremental challenges in the technology ecosystem. *J Health Serv Res Policy.* 27:253-254.
- Hunfeld N, Diehl JC, Timmermann M et al. (2022) Circular material flow in the intensive care unit - Environmental effects and identification of hotspots. *Intensive Care Medicine.* 114(5):250-263.
- Karliner J, Slotterback S, Boyd R et al. (2022) Health care's climate footprint: the health sector contribution and opportunities for action. *Eur J Public Health.* 30(Suppl_5):ckaa165-843.
- Kirchherr J, Reike D, Hekkert M (2017) Conceptualizing the circular economy: an analysis of 114 definitions. *Resour Conserv Recycl.* 127:221-232.
- McGain F, Muret J, Lawson C, Sherman JD (2020) Environmental sustainability in anaesthesia and critical care. *Br J Anaesth.* 125:680-692.
- McGain F, Burnham JP, Lau R et al. (2018) The carbon footprint of treating patients with septic shock in the intensive care unit. *Crit Care Resusc.* 20:304-312.
- Reike D, Vermeulen W, Witjes S (2018) The circular economy: new or refurbished as CE 3.0? Exploring controversies in the conceptualization of the circular economy through a focus on history and resource value retention options. *Resour Conserv Recycl.* 135:246-264.
- Rizan C, Reed M, Bhutta MF (2021) Environmental impact of personal protective equipment distributed for use by health and social care services in England in the first six months of the COVID-19 pandemic. *Journal of the Royal Society of Medicine.* 114(5):250-263.
- Steenmeijer MA, Rodrigues JFD, Zijp MC, Loop SLW der (2022) The environmental impact of the Dutch healthcare sector beyond climate change: An input-output analysis. *The Lancet Planetary Health.* 6(12):e949-e957.
- Transition to a sustainable healthcare sector (2019) Gupta Strategists. Available at <https://gupta-strategists.nl/en/research/een-stuur-voor-de-transitie-naar-duurzame-gezondheidszorg>
- Trent L, Law J, Grimaldi D (2023) Create intensive care green teams, there is no time to waste. *Intensive Care Med.*
- vd Berg L et al. (2022) Towards greener ICUs: Redesigning the use of disposable gloves. Abstract. Available at https://www.heps2022.com/_files/ugd/3d0da7_49a6b09a01744a3380aab7a0b79cdf88.pdf
- Vozzola E, Overcash M, Griffing E (2018) Environmental considerations in the selection of isolation gowns: a life cycle assessment of reusable and disposable alternatives. *American journal of infection control.* 46(8):881-886.
- World Health Organization (2018) Healthcare waste. Available at <https://www.who.int/news-room/fact-sheets/detail/health-care-waste>



Jack Parry-Jones

Vice Dean Faculty of Intensive Care Medicine
Consultant Critical Care
Cardiff and Vale University Health Board
University Hospital of Wales
Cardiff, Wales

jack.parryjones@wales.nhs.uk
@JackParryJones2



Heather Baid

Principal Lecturer
School of Sport and Health Sciences
University of Brighton
Brighton, England

h.baid@brighton.ac.uk
@heatherbaid

Moving Environmental Sustainability from the Fringe to the Centre Ground in Critical Care

Critical care must move to a way of working that recognises climate change is a medical emergency, necessitating us all to put sustainability at the forefront of our actions as a multidisciplinary team working together in the best interests of our patients, our environment and our resources.

Planetary Health and Public Health

People's health depends on the health of the planet. The ever-escalating climate crisis negatively impacts public health, from the direct impact of extreme weather events, including heatwaves, wildfires, droughts, hurricanes, rising sea levels and flooding (Romanello et al. 2022) to the indirect impacts of climate-change-instigated migration and conflict. The United Nations (UN) recognises the urgent need to resolve human-induced climate change in their Framework Convention on Climate Change (UNFCCC), Intergovernmental Panel on Climate Change (IPCC), and annual Conference of the Parties (COP) (UN Climate Change 2023). The COP26 Health Programme included five priority initiatives for improving the climate crisis: 1) building climate resilient health systems; 2) developing low carbon sustainable health systems; 3) adaption research for health; 4) inclusion of health priorities in Nationally Determined Contributions; and 5) raising the voice of health professionals as advocates for stronger ambition on climate change (WHO Climate Change and Health 2021).

We are in a critical decade, with the IPCC (2023) highlighting that despite challenges thus far, it is not too late to restrict global warming to 1.5°C by 2030 through "rapid and deep emissions reductions across all sectors of the global economy" (Stiell 2023). Otherwise, the human health issues resulting

from the climate crisis will worsen, leading to both an environmental catastrophe and a global public health medical emergency (Howard et al. 2023). However, climate change is not the only interlinked planetary and public health concern. To avoid 'carbon tunnel vision', a holistic approach to environmental sustainability should also address ecosystem issues related to water, land, atmosphere, biosphere and resource availability (Deivanayagam and Osborne 2023; Fang et al. 2022). Furthermore, social justice issues can be both a cause and an effect of ecological problems with interrelated public health implications (Figure 1). It is also unethical how people in low-income countries often experience the worst impacts of climate change, and yet they contribute minimally to planetary damage (Chapman and Ahmed 2021).

Environmental Sustainability and Intensive Care

Intensive care clinicians and managers must become more aware of the intrinsically linked planetary and public health problems in Figure 1 to understand better how they can actively participate in both mitigation by reducing healthcare's environmental footprint (ANZICS 2022) and adaptation by adjusting to current and future ecological issues (Bein et al. 2020), as outlined in Table 1.

The 'People, Planet and Profit' model recognises the interconnectivity of finan-

cial, social and ecological systems, with sustainable resourcing of one element impacting and being co-dependent on the others (Elkington 2002; Oung 2022). The true success of all sectors, including healthcare, requires this triple-bottom-line philosophy. Still, clinicians and healthcare managers have not yet widely normalised addressing environmental sustainability, despite healthcare causing 4.4% of the total greenhouse gas emissions globally (Karliner et al. 2019) and intensive care generating a significantly high environmental footprint (McGain et al. 2018; McGain et al. 2020). We must urgently move environmental sustainability from the fringe to the centre ground in intensive care. This means a new way of thinking to prioritise sustainability in all aspects of clinical care, including purchasing and using drugs and equipment, using energy efficiently (with renewable sources where possible) and dealing with waste. Healthcare should not be resting on its laurels, believing it already does enough good on behalf of others; in relation to environmental sustainability, we need less tokenism and more implementation. What was viewed previously as "hippy green" activism should now rapidly transition into mainstream realism.

Placing sustainability into the centre ground in how we work, think, and approach healthcare cannot be restricted solely to interested individuals; instead, it needs

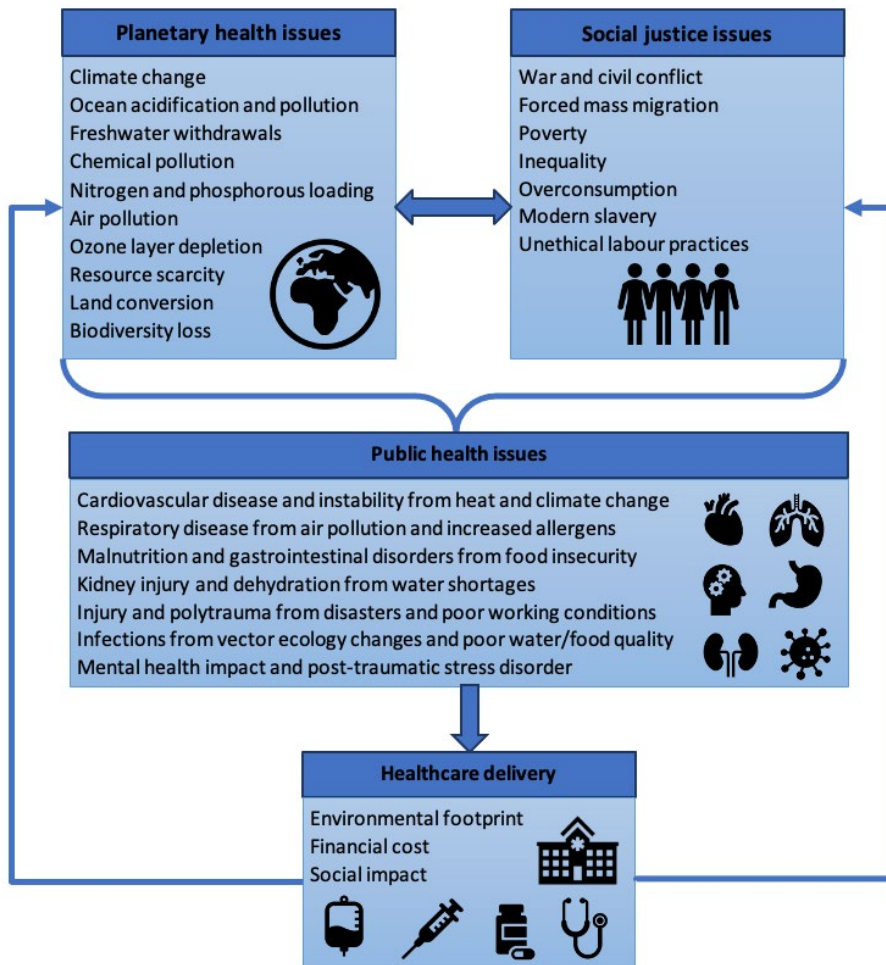


Figure 1. Planetary health, social justice, public health and healthcare delivery interconnectivity

to involve the entire multidisciplinary team. Managers and non-clinical facing staff are at least as necessary, if not more important, than nurses, pharmacists, allied health professionals, assistant roles and doctors. It is incorrect to view sustainability as more expensive than continuing as we are – far from it. If done well, sustainable healthcare can deliver better patient care, save resources and money, add social value, and generate less waste (Mortimer et al. 2018).

Operationalising Intensive Care Sustainability

What does putting sustainability into the centre ground mean, though? Operationalising sustainability by changing platitudes into actions requires leadership and teamwork

between directorate management, estates, waste, pharmacy, procurement and all roles working in an intensive care unit (Trent et al. 2023). A multi-disciplinary intensive care sustainability team can be set up and linked with other directorates and an overarching hospital sustainability team. Before absolving individual responsibility by assuming sustainability teams cover everything, it is essential to remember that responsibility is simultaneously individual and collective and that agreed intensive care sustainability actions should be coordinated to be most effective (Stamps et al. 2020). For example, the critical care unit at the University Hospital of Wales has a carbon footprint of approximately 1% of the Health Board's total carbon footprint. This hospital's intensive care unit can and has made

efficiencies, including turning computers off overnight, using light-emitting diode bulbs, and not fully charging unnecessary electrical equipment at all times. Without coordination with other directorates and wide rollout across a hospital site, the efficiencies made in intensive care will be very small but still important as part of a whole system approach.

Another example of operationalising healthcare sustainability is the 'gloves off' campaign initiated by nurses in Great Ormond Street Hospital, London who demonstrated that decreasing unnecessary non-sterile glove use saves money and reduces waste (Greener NHS 2020; NHS England 2018). The critical care team in the University Hospital of Wales spends in excess of £100,000 on non-sterile gloves. Reducing inappropriate gloves use by 20% could save £20,000 without impacting patient care and decreasing the critical care unit's environmental footprint. Rolling out a 'gloves off' campaign in intensive care units across a region, network or country would significantly improve environmental sustainability and achieve significant financial savings without impacting patient care. To do so requires education for glove users, coordination within teams, good role models and clear leadership.

Zentensivism is a concept used to delineate a different way of practising intensive care; with less intervention and more compassion (Ahrens 2021; Siuba et al. 2020). Fewer tests do not mean less care. Tests should be considered in terms of 'is this test justified' and 'will the result of this test change my management' or will watching and waiting provide better holistic patient and family-centred care? Zentensivism was not initially connected to sustainability, but there is a clear link between sustainability and fewer tests, better recognition of when further interventional care will not improve the patient's outcome and earlier initiation of end-of-life care as the most appropriate course of action. Patients in intensive care have a proportionately high mortality rate (Detsky et al. 2017). If those most at risk of dying can be identified more clearly and earlier, we can deliver better, more sustainable care. This principle also

Mitigation	
Decreasing the environmental impact of intensive care services	Reduce the demand for intensive care through health promotion and preventative measures to reduce admissions into intensive care and facilitate early discharge out of intensive care
	Use lean delivery, 'Zentensivism' (less is more) and Goldilocks principle (not too much or too little but just right) to minimise waste and ensure care is patient-centred and clinically appropriate
	Use environmentally friendly products and processes where possible in the intensive care unit
	Follow a circular economy approach in intensive care where possible: refuse, reduce, reuse, repair, refurbish, remanufacture, repurpose, recycle and recover energy
	Consider which intensive care unit equipment and supplies have a high environmental footprint and liaise with industry and researchers to find alternative sustainable solutions
	Embed environmental sustainability into quality improvement initiatives using SusQI methodology
	Integrate environmental sustainability into undergraduate and post-graduate education for all disciplines, along with education for healthcare assistants, technicians and support roles
Provide leadership for environmental sustainability at intensive care departmental and executive hospital levels through strategic guidance and resources to enable the intensive care unit to reach environmental targets that are specific, measurable, achievable and meaningful to staff	
Adaption	
Intensive care unit preparation for current and future planetary health issues	Emergency planning for extreme environmental events – consider how the hospital and intensive care unit would manage sudden and sustained disruption to the availability of: <ul style="list-style-type: none"> · Electricity, gas and water · Medicines, equipment, other healthcare supplies, food and water · Transport of patients, family and staff · Waste disposal
	Emergency planning for environmentally caused illness, infections and trauma – consider how the intensive care unit would manage a sudden and sustained increased demand for: <ul style="list-style-type: none"> · Bed capacity and required staffing for a large rise in the number of critically ill patients · Isolation rooms and personal protective equipment for infectious diseases · Equipment for more patients, including ventilators, renal replacement therapy machines, intravenous pumps, medicines, oxygen, fluids and nutrition · Psychosocial support for patients, family and staff members
	Future-proof planning for resource scarcity – consider which intensive care equipment and supplies depend on consumables, rare metals and fossil fuels and liaise with industry and researchers to find alternative sustainable solutions.

Table 1. Environmental issues: adaption and mitigation for intensive care units

applies to whether intensive care should play a role at the outset of critical illness; nearly all of us will be critically ill before we die, but that does not mean nearly all of us should receive critical care as the

best care option. Medicine and wider society need to engage better about what is possible and, in a broader sense, what is most appropriate and sustainable at the end of life.

Tools and Resources for Sustainable Intensive Care

There are resources now available to clinicians, managers, researchers and educators which explicitly relate to environmental

sustainability. The following is a list of intensive care-specific resources to help guide planning, implementing and evaluating environmental sustainability initiatives for intensive care units:

- [A Beginner's Guide to Sustainability in the ICU](#) (ANZICS 2022).
- [Critical Care Susnet](#) – sustainability network hosted by the Centre for Sustainable Healthcare and endorsed by the Intensive Care Society and British Association of Critical Care Nurses (CSH Networks 2023).
- [My Green ICU](#) collection for the European Society of Intensive Care Medicine's Intensive Care Medicine journal (Bein and McGain 2023).

Those wanting to improve the environmental sustainability of their local unit should also consider indirectly relevant resources which fit the ethos of stewardship, 'less is more', the Goldilocks Principle (not too much, not too little and just the right amount of intervention) and complication prevention. For instance, the ICU Liberation bundle (Society of Critical Care Medicine 2020), ventilator-associated pneumonia bundle (Mastrogianni et al. 2023), antimicrobial stewardship (Murphy et al. 2022) and fluid stewardship (Hawkins et al. 2020) all promote a speedier recovery for the critically ill with fewer complications and less resource use, thereby lowering the environmental footprint of an intensive care unit stay. Initiatives to reduce inappropriate intensive care unit admissions and enhance timely discharge can also be

developed using a sustainability lens.

There are a variety of environmental sustainability resources, organisations and events that are relevant to all healthcare areas, including intensive care, such as:

- [SusQI Framework](#) – model to embed sustainability within quality improvement to address environmental sustainability, reduce financial cost and add social value while improving healthcare quality with free resources and templates.
- [Centre for Sustainable Healthcare](#) – engages healthcare professionals, service users and the wider community to understand better the interconnectivity between health and the environment and work towards reducing healthcare's resource footprint.
- [Health Care Without Harm](#) – an international organisation with regional sections for América Latina (Spanish and Portuguese versions), Asia, Europe and US-Canada and publications and resources translated into multiple languages.
- [Centre for Sustainable Health Systems](#) – supports research, education, communities of practice, strategic initiatives and events related to promoting sustainable healthcare.
- [Nordic Centre for Sustainable Healthcare](#) – brings together stakeholders, organisations and projects to provide a network and platform for promoting ecologically sustain-

able healthcare.

- [Healthcare Ocean](#) – provides advocacy, education and collaboration to reduce the unintentional oceanic damage caused by the procurement and delivery of healthcare.
- [WHO Health-care waste](#) – World Health Organization guidance on ensuring safe and sustainable healthcare waste management.

Conclusion

Intensive care units use proportionately excess amounts of energy, consumables, medicines and staff in our care processes, and we generate large amounts of waste. We must recognise how intensive care's environmental footprint contributes to poor planetary health. It is time for environmental sustainability to become an urgent central focus in delivering intensive care services to minimise the damage caused to our environment whilst also providing the best and most appropriate care for the critically ill.

Conflict of interest

There are no conflicts of interest for Dr Jack Parry-Jones. Dr Heather Baid has received grants related to healthcare environmental sustainability from the University of Brighton Rising Stars award, and the British Association of Critical Care Nurses and Research England. ■

References

- Ahrens I [2021] Patient-centred intensive care medicine using a holistic approach: #zentensivist—an interview with Dr Matthew Siuba. *Eur Heart J Acute Cardiovasc Care*. 10(7):823-824.
- Bein T, Karagiannidis C, Quintel M [2020] Climate change, global warming, and intensive care. *Intensive Care Med*. 46(3):485-487.
- Bein T, McGain F eds. [2023] Collection: My Green ICU. *Intensive Care Med*. Available at link.springer.com/collections/aefebhegjj
- Chapman AR, Ahmed AK [2021] Climate justice, human rights, and the case for reparations. *Health Hum Rights*. 23(2):81-94.
- Deivanayagam TA, Osborne RE [2023] Breaking free from tunnel vision for climate change and health. *PLoS Global Public Health*. 3(3):e0001684.
- Detsky ME, Harhay MO, Bayard DF, Delman et al. [2017] Six-month morbidity and mortality among intensive care unit patients receiving life-sustaining therapy. A prospective cohort study. *Ann Am Thorac Soc*. 14(10):1562-1570.
- Elkington J [2002] *Cannibals with forks: the triple bottom line of 21st-century business*. Oxford, Capstone.
- Fang L, Hixon R, Shelton C [2022] Sustainability in anaesthesia and critical care: beyond carbon. *BJA Educ*. 22(12):456-465.
- Greener NHS [2020] Great Ormond Street Hospital – reducing single-use plastics case study. Available at england.nhs.uk/greenernhs/whats-already-happening/great-ormond-street-hospital-reducing-single-use-plastics-case-study/
- Hawkins WA, Smith SE, Newsome AS et al. [2020] Fluid stewardship during critical illness: A call to action. *J Pharm Pract*. 33(6):863-873.
- Howard C, MacNeill AJ, Hughes F et al. [2023] Learning to treat the climate emergency together: social tipping interventions by the health community. *Lancet Planet Health*. 7(3):e251-e264.
- IPCC [2023] AR6 Synthesis Report: Climate Change 2023. Available at [ipcc.ch/report/sixth-assessment-report-cycle/](https://www.ipcc.ch/report/sixth-assessment-report-cycle/)
- Karliner J, Slotterback S, Boyd R et al. [2019] Health care's climate footprint. How the health sector contributes to the global climate crisis and opportunities for action. *Health Care Without Harm and ARUP*. Available at noharm-global.org/sites/default/files/documents-files/5961/HealthCares-ClimateFootprint_092319.pdf
- Mastrogianni M, Katsoulas T, Galanis P et al. [2023] The impact of care bundles on ventilator-associated pneumonia (VAP) prevention in adult ICUs: A systematic review. *Antibiotics*. 12(2):227.
- McGain F, Burnham JP, Lau R et al. [2018] The carbon footprint of treating patients with septic shock in the intensive care unit. *Crit Care Resusc*. 20(4):304-312.
- McGain F, Muret J, Lawson C et al. [2020] Environmental sustainability in anaesthesia and critical care. *Br J Anaesth*. 125(5):680-692.
- Mortimer F, Isherwood J, Wilkinson A et al. [2018] Sustainability in quality improvement: redefining value. *Future Healthc J*. 5(2):88-93.
- Murphy CV, Reed EE, Herman DD et al. [2022] Antimicrobial stewardship in the ICU. *Semin Respir Crit Care Med*. 43(1):131-140.
- NHS England [2018] 'The gloves off' campaign. The Atlas of Shared Learning. Available at england.nhs.uk/atlas_case_study/the-gloves-are-off-campaign/
- For full references, please email editorial@icu-management.org or visit <https://iii.hm/1kia>



Irene Salinas Gabiña

Intensivist
Intensive Care Unit
Hospital Universitario del
Henares
Coslada-Madrid, Spain
Professor of Physiology
School of Medicine
Universidad Francisco de
Vitoria
Pozuelo de Alarcón
Madrid, Spain
irenesalinas@hotmail.com



**Sonia Pajares
Martínez**

Resident
Intensive Care Unit
Hospital Universitario del
Henares
Coslada-Madrid, Spain
soni_pm93@hotmail.com



**Federico Gordo
Vidal**

Head of Department
Intensive Care Unit
Hospital Universitario del
Henares
Coslada-Madrid, Spain
Grupo de Investigación en
Patología Crítica
Facultad de Medicina
Universidad Francisco de
Vitoria
Pozuelo de Alarcón
Madrid, Spain
fgordo5@gmail.com

Introduction and Justification

GREEN ICU (GREater ENvironmental sustainability in Intensive Care Units) is a multidisciplinary initiative that aims to develop evidence-based guidelines to reduce the environmental footprint of intensive care practice. Nowadays, we need a sustainable approach to our critical patient care that reduces the environmental impact of an ICU.

According to the Brundtlandt Report (1987), sustainable development is development that meets the requirements of the present generation without jeopardising the needs of future generations. Being aware of the scarcity of energy, resources and ecological footprint that measures the impact of our health activity is necessary to initiate any sustainability strategy.

Thirty-six years after Brundtlandt's definition, the danger is not only for future generations but also for current generations.

Green ICU-4Ps: It Is Not An Option To Not Accomplish It

The critically ill patient should be framed within sustainable medicine. It is crucial to mitigate the causes so that we do not have to adapt to the undesirable effects of the unsustainability of our clinical practice. We propose a simultaneous approach to sustainability in people, products, processes, and our planet.

Air pollution is the fifth most frequent cause of mortality worldwide: 4.2 million deaths/year (Schraufnagel et al. 2019). The main pollutants are sulphur dioxide, nitrogen oxide and volatile organic compounds.

A variety of strategies are included in sustainable medicine to lessen our effect on the environment: reducing our greenhouse gas emissions, water pollution, ecotoxicity, and social and economic impact. To prevent worse things from happening, just like with our patients, the main thing is to do no harm, including to our planet (Fang 2022).

The reality is that there is a problem of lack of sustainability in our health services, hospitals, and ICUs. Healthcare accounts for 5% of the world's GHGs. If healthcare were a nation, it would be the fifth largest GHG nation (Lenzen 2020).

It has been quantified that 30% of our clinical care is low value which would pollute without any health benefit (Barratt 2022). We, the professionals who care for each of our critical patients, are the guarantors of solving this. Therein lies another problem: our lack of regular updates on what we need to know to be part of the solution.

The impact on the environment is analysed through:

- A. Medical care. Expenditure, energy use of facilities and type of care.
- B. Life cycle analysis (LCA) or cradle-to-grave analysis. Analyses the environmental impact of natural resource extraction, manufacturing, packaging, transport, use/reuse and recycling/disposal of product or process waste (McGain 2018).
- C. Material flow analysis (MFA). Quanti-

fies material and waste flows entering and exiting the system defined in a given space (patient admitted to ICU) and time (day), with identification of environmental hot spots in ICU that require urgent efforts with opportunities for sustainable innovation.

- D. The carbon footprint, which represents the total volume of greenhouse gases (GHG: CO₂, methane, nitrous oxide, others) produced by our activity, measured in CO₂ emissions. As an indicator of this footprint, we use CO₂ emissions or Carbon Dioxide Equivalent (CO₂e). Its calculation helps an organisation to know its impact on the climate.
- E. Identifying the impact of the way we dispose of our waste.

In the following section, we present studies with different approaches that aim to objectify the environmental impact of our professional activity with data on the previously listed points.

A. Medical Care

Healthcare and the associated expenditure vary greatly from country to country. In the U.S., it is more than 17% of GDP. A higher carbon footprint can be inferred from higher spending on healthcare. In the U.S., healthcare accounts for 10% GHG of the national total (Matthew 2020). In Australia and European countries, it is 7% (Malik 2018). The hospital and pharmaceutical sectors have the largest combined footprint (60%). This carbon footprint in the hospital sector was observed in a study in the U.K., which attributed 20%

to buildings (electricity and gas) and 80% to clinical care (Tennison 2021).

Regarding hospitals as well as buildings, they consume 40% of the planet's materials, 30% of its energy and generate 20% of the solid waste stream. The ICUs of our hospitals, as structurally individual departments, can receive regular information on their energy expenditure with the aim of reducing energy and water use and initiating strategies with technicians and administrators.

Regarding healthcare, expenditure, and GHGs, they do not imply better outcomes and life expectancy (Bein 2023). It has also been studied how much of the GHG emitted would be avoidable. It was assessed that 10% of medical care is harmful, and 30% is low-value care (Barratt 2022). Reducing iatrogenesis and increasing adherence to "do not do" recommendations reduces burdens on the patient, expenditure, and the environment (Bein 2023).

Indeed, the deterioration of health caused by the unsustainability of the system perpetuates itself. Healthcare services themselves deal with a greater number of pathologies related to climate change, which leads to greater production of GHGs due to this new workload (Salas 2019; Sherman 2021).

B. Life Cycle Analysis

In healthcare and in our ICUs, a wide variety and quantity of materials enter, are used, and disposed of, each with its own life cycle (LCA) and environmental impact. Between 2005 and 2020, the use of disposable materials has more than doubled, and the use of PPE during the COVID-19 pandemic has exacerbated this (Statista 2022).

ReCiPe is a method that assesses LCA developed in 2008 through cooperation between Radboud University Nijmegen, Leiden University and PRé Sustainability. It aims to transform our huge inventory of various life cycles into a limited number of indicators. ReCiPe 2016 is an improvement of ReCiPe 2008 (and its predecessors CML 2000 and Eco-indicator 99). This method is updated (by Radboud University) to incorporate new data and research.

The scoring of these indicators expresses the relative severity in an environmental impact category. In ReCiPe they divide the indicators into 18 mid-point indicators and three end-point indicators. Each item is also evaluated according to its temporality, management expectations or technological progress. The ReCiPe framework includes advantages such as the use of global impact mechanisms, consensus modelling and long-term thinking based on the precautionary principle.

C. Material Flow Analysis

ICUs are a major contributor to CO₂ emissions (Hunfeldt 2022). They conducted a material mass flow analysis (MFA) in a university ICU in Rotterdam in 2019. The MFA was measured by analysing inputs and outputs of the ICU throughout the year in kilograms, average number of products used x number of patients/day and mass in kg of materials used per patient/day. The study was followed by an environmental footprint analysis. The secondary objectives of this study were to obtain data on mass, carbon footprint, water use and to determine the environmental hotspots in an ICU. The study, during which 2,839 patients were admitted in 2019, with an average stay of 4.6 days, showed an MFA of 247,000 kg during their ICU stay. Of this MFA, 50,000 kg was incinerated as hospital hazardous waste. The environmental impact per patient resulted in 17 kg of mass, 12 kg CO₂e, 300 L of water use and 4 m² of agricultural land occupation per day.

Five critical points were identified in this study: non-sterile gloves, isolation gowns, bed protectors, surgical masks and syringes (including packaging).

With this material flow analysis, it is clear that carbon net zero does not equate to zero environmental impact. Every day, pharmaceuticals and consumables that cause ecological damage and GHG emissions are used and wasted (Grand View Research 2021). Therefore, it is important to stress that there are processes with advantages over others (recycling compared to manufacturing), but they all have a negative effect. Furthermore, the best way to reduce the damage to the planet is to

reduce consumption.

D. Carbon Footprint

In our daily lives, we should reach carbon neutrality, which is achieved when the same amount of carbon dioxide (CO₂) is emitted into the atmosphere as is removed from it in different ways, which is called a zero carbon footprint. The current carbon footprint is mainly derived from human use. The first cause is fossil fuel combustion, and the second cause is deforestation. In addition, we generate a carbon footprint when we use products and when we dispose of them. Also, we far exceed our GHG generation in relation to the earth's capacity to buffer it.

We release pollutants into the air, either directly from the source or secondary to the interaction between different compounds in the atmosphere (ozone of nitrogen oxides in the presence of sunlight). Our biological stores of carbon are the oceans and forests. The Amazon rainforest stores up to 200 billion tonnes of carbon. However, 20% of its area has been deforested in the last 60 years, and it is still increasing exponentially. The causes of this are agriculture (soy: the main component of propofol, palm), oil, droughts, and fires caused by climate change (D'Amato et al. 2017).

To help us understand ourselves and initiate decarbonisation and ecological transition, we can use ScopeCO₂ (at sanidadporelclima.es; free online tool), which calculates our carbon emissions, also from hospitals. In this tool, GHGs are calculated from the activity data entered by the user for the year of calculation. It distinguishes between emissions generated in sources owned and controlled by the healthcare institution, associated with electricity consumption purchased from the energy producer, and others, for example, generated by staff travel or patient transfer services.

In this tool, emission factors of the type of kg of CO₂ per kWh of electricity consumed are applied, following the international GHG Protocol methodology and with data from the Spanish Climate Change Office (Ministry for Ecological Transition and the Demographic Chal-

lenge) and the National Commission for Markets and Competition for electricity.

The carbon footprint of the health sector is equivalent to 4% of global net emissions (McGain et al. 2020). In Spain, the ecological footprint is 2.6 times higher than the sustainable footprint. But improvement is possible. The U.K. NHS has achieved a reduction in its carbon footprint of 580 kt CO₂e by 2021 (NHS 2020).

To help reduce this impact, fifty countries - Spain among them - committed at COP26 to developing climate-resilient, low-carbon health systems (COP26 Health Programme). Of these, forty-five committed to transforming their health systems to make them more sustainable and reduce their emissions. Fourteen countries even set 2050 as the target date for GHG=Zero.

The platform that brings together health actors committed to tackling the climate emergency is Health#ForTheClimate. Its aim is to help reduce the sector's carbon footprint and achieve carbon neutrality by 2050. This initiative is part of Community#ForTheClimate, a multi-disciplinary platform with the aim of implementing the Paris Agreement and which has the support of ECODES, the company MSD and the collaboration of the social responsibility healthcare network.

E. Waste Disposal

Identifying the impact of the way we dispose of our waste. The scale of the problem is enormous. The NHS generated 624,000 tonnes of waste between April/19 and March/2020. Although ICU waste has not been systematically quantified, approximately 50% could be recyclable (McGain 2009). At the NHS level (Silva et al. 2021), 47% of waste was incinerated, 16% was recycled, 7% went to landfill, and the remainder underwent alternative treatments. Since the COVID-19 pandemic, medical waste has increased by up to 350% in some countries, mainly from plastic personal protective equipment (PPE).

Incineration does not completely destroy the waste and leads to further contamination of air, water and soil (Fang 2022). Studies have shown higher rates of cancer and perinatal defects in communities around

waste incinerators (Thompson 2008).

Wastewater treatment plants are not designed to remove pharmaceuticals. Products are discharged into water (they have even been detected in drinking water) or used as agricultural fertiliser. According to the Swedish Chemical Agency, the environmental impact on water of these discharges depends on three factors of the products or pharmaceuticals: persistence (ability to resist degradation), bioaccumulation (in the fatty tissue of aquatic animals) and toxicity (potential harm). The impact of these factors on everyday drugs such as propofol (Mankes 2012; Favetta 2002), opioids, antibiotics (Gothwal 2015), lido and bupivacaine, sugammadex and paracetamol has been studied with disappointing findings. In that study, hazardous materials such as cadmium, chromium, dioxins, polycyclic aromatic hydrocarbons, BTEX compounds, sulphur dioxide, nitrogen oxide, etc., which are thrown away, have been found to cause, through ingestion, inhalation or topical absorption: respiratory, cardiovascular, gastrointestinal, renal and nervous system diseases. Plastic, despite its recycling, remains plastic, only decreasing its size or deteriorating its quality. Only paper has less impact, but its recycling is also associated with air and water pollution.

Special attention should be paid to the fact that 90% of oral medicines (mainly antibiotics and antidepressants prescribed on an outpatient basis) are excreted in wastewater as active substances (original dosage form or metabolites) via the faeces and urine of patients. As for the disposal of antibiotics, since wastewater is rich in nutrients and bacteria, this type of waste can lead to the development of antibiotic-resistant strains. This causes more than 33,000 deaths and the loss of more than 874,000 disability-adjusted life years/year

in Europe (Cassini 2019). This will worsen with antibiotic resistance genes already detected in environmental samples.

In addition, detergents of hospital laundries also contribute to environmental damage (Fang 2022). These products have surfactants (which damage fish gills and increase vulnerability to toxins), phosphate (already banned), EDTA (which increases the bioavailability of heavy materials) or bleaching agents (hydrogen peroxide is biocidal).

The last step for any product may be landfilling, even after recycling it or treated in waste plants or incinerated. Landfills have been associated with public health risks. Methane, CO₂, nitrogenous products, heavy metals, and bioaerosols (fungi, enterobacteria, endotoxins) can, through their contamination of soil, water and air, cause rhinitis, asthmatic flare-ups, and infections (Health Protection Agency 2011).

What is crucial is prevention, prioritising the least (Royal College of Anaesthetics 2022) and best first use. The impact of disposing of used items is impossible to be harmless nowadays. This is the reason for the COP26 Health Programme. In addition, in Latin America, the Health Care Without Harm Programme works to transform the global health sector to be ecologically sustainable and promote environmental health and justice, highlighting in 2022 the initiative "Hospitals that heal the planet".

In Madrid, the Santa Cristina Hospital achieved full quality and environmental certification for all its processes in March 2022 with the development of a Management System based on the ISO 14001:2015 standard, minimising its impact on the environment and collaborating in the sustainability of its surroundings based on energy efficiency, water consumption and proper waste segregation. Its objec-

PRODUCTS	PROCESSES	PEOPLE	PLANET
• Use fewer products	• Achieve more with less	• Healthcare professionals	• Reduce
• Use better products	• Early detection	• Patient	• Reuse
• Better use of products	• Better healthcare	• Family and society	• Recycle

Table 1. ICU-4P's and their approaches

tives include implementing legal recommendations and requirements, pollution prevention, sustainable use of resources, energy efficiency programmes, environmental commitment with its suppliers and promoting training for continuous environmental improvement.

The Hospital Universitario del Henares was inaugurated in 2008, with a polyvalent ICU which, following the COVID-19 pandemic, has sixteen structural beds. Its construction provided it with natural light, and it was defined as a paperless hospital. During the COVID-19 pandemic, we were overwhelmed by the large amount of waste from patient care. In the aftermath, we felt it was the ideal time to optimise our clinical practice for more sustainable critical patient care. Nevertheless, at the moment, all ICUs have in common several intrinsic aspects in their activity that make it difficult to achieve a GREEN ICU:

- Increased number of diagnostic and therapeutic procedures, especially in high-tech ICUs, which may even generate more GHGs without necessarily improving mortality, prognosis or patient comfort.
- Increased average life expectancy and comorbidity of our patients.
- Continuous activity of staff, resource use, and energy demands.

Knowing each other is essential to find solutions. We have already come a long way. The Drawdown Report (drawdown.org) is an international initiative launched by climate change scientists. It considers the hundred most practical options that, if implemented, may halt climate change in just one generation. There have been proposals for solutions focused on critical patient care for more than a decade (Chapman 2011) and even studies on it (Baid 2020). However, we need to have at hand a sustainability kit for our ICUs along the lines of those already developed by the Australian and New Zealand Intensive Care Society (ANZICS 2022). They are a guide for intensivists who want practical measures to reduce the carbon footprint of our ICUs. We present our approach where medical and environmental ethics walk hand in hand (MacNeill 2021).

Goals

The characteristics of our objectives are that they must be agreed upon, assumed by all, focused on the long term, with a real impact, and with a local and global scope with the aim of moving from a linear to a circular system and integrated into our work and personal identity.

- **Primary objective:** to train professionals who work in critical patient care and develop strategies to reduce the environmental impact of a sixteen-bed polyvalent ICU.
- **Secondary objectives:** focused on the 4Ps to cure and care for our planet, people must act on themselves, on the products and processes of critical patient care.
 - Products
 - Processes
 - People
 - Planet

Management: Research, Training, and Clinical Practice for a Sustainable ICU

The approach to the analysis of our situation must be holistic and integral, with the participation of the whole team and the evaluation of processes and results. This great complexity is an enormous opportunity to work together on different variables without having to use differentiated strategies that may conflict.

For an ICU to be sustainable, it needs

measures to prevent its carbon footprint, resource use and waste management. It also needs to apply broader and broader concepts. Moving from the best available evidence-based medicine, having added patient-based medicine and now it is also time for planet-based medicine. A planet-based medicine that needs the 10 Rs: reject, rethink, reduce, reuse, repair, refurbish, remanufacture, reuse, recycle and recover.

A sustainable ICU is a concept of a non-linear but cyclical development. It is based on a dynamic equilibrium that allows self-regulation and feedback. According to the principle of subsidiarity, problems should be solved as close as possible to their source. This is where we are on the front line in our ICUs.

We need to know, through subsequent research and training, what to measure and how to solve each step of our clinical practice in a GREEN ICU. Following the secondary objectives set out above, we are going to order our suggestions for sustainability without implying this as an order of priorities.

Products

Use fewer products

- Less use of raw materials in their manufacture (Table 2) (Fang 2022).
- Reduced use of single-use equipment. Gloves are the largest single-use product. Latex gloves contribute to deforestation because they require

Metals	Plastics
Stainless steel (cannulas, needles, and laryngoscope blades) contaminates through coke (fuel with high carbon content). It emits naphthalene, ammonium, and sulphur compounds. In addition, stainless steel contains 10-20% chromium, which impairs photosynthesis and is associated with respiratory diseases, neurological damage, and tumours (Ukhurebor 2021).	Ethylene and propylene are extracted by fracking, which produces wastewater containing salts, organic matter, and radioactive materials. According to the U.S. Environmental Protection Agency, there is an increased need for hospitalisation for cancer, neurotoxicity, liver damage, kidney damage, and foetal development.
Titanium releases radionuclides, contaminates groundwater and has toxicity from the chlorine used for cleaning.	Processing fossil fuels to produce plastic resins releases carcinogens and nerve agents.
Cobalt used in surgical implants and batteries is 60% mined in the Republic of Congo, with no respect for even human rights in its extraction (Amnesty International 2016).	Most of the environmental impact of plastics happens after use. Both in the form of macro and microplastics.

Table 2. Reasons for using less raw materials

rubber. On the other hand, nitrile gloves are made from a petroleum-derived copolymer of acrylonitrile and butadiene. Highlight the GOSHs Gloves Off Campaign of the Great Ormond Street Hospital for children (NHS) with its mission to encourage health professionals to reduce the unnecessary use of non-sterile gloves.

- Fewer products, less local carbon emission from the energy in their manufacture.
- Reduced need for transport, reduced GHG emissions. NHS-related road transport is responsible for 3.5% of all journeys in England. It accounts for 7,285 tonnes of nitric oxide/year and 330 tonnes of particulate matter, mostly less than MW 2.5 (NHS 2020). Air pollution leads to 40,000 deaths per year in the U.K. so NHS-related transport could be responsible for 1,400 of those deaths (Royal College of Physicians 2016).
- Lower MDR rate, reduced need for isolations and rationalisation of the use of drugs, gowns, and gloves.

Use better products

- Purchase more energy-efficient technology and products.
- Ensure suppliers manufacture products and drugs (e.g., propofol) ethically and sustainably.
- Evaluate with manufacturers to remove redundant parts from devices already packaged as a set for use.
- Longer-lasting batteries, less polluting in their manufacture and disposal.
- Local products with a smaller ecological footprint in their transport due to the distance and means of transport.
- Use of bronchodilator inhalers, etc. with a lower carbon footprint.
- Use of drugs in more concentrated formulations.
- Purchase reusable versus single-use equipment. There are NIV face interface LCAs, breathing circuits, dressing boxes, bed linen.
- Plastic-free packaging.

Better use of products

- Adapt stocks to consumption of both medication and materials to avoid expiry.
- Better treatment of equipment that is used and can be repaired in situ by a biomedical engineer in a short period of time.
- Avoid using medicines, monitoring, and vascular accesses with little value in the healing process of that disease.
- Protocol cleaning of filters to improve air quality.
- Use perfusions that come from other places of care other than the ICU.
- Manufacture products with alternative substances to plastic.

Processes

Achieving more with less

- Digitalisation and use of intelligent technologies.
- Streamlining our processes: individualised protocols for each hospital and patient.
- Informed consent for admission and other techniques, data protection document without needing to sign them on paper. Transmission from the patient's unit or family information room with an electronic document holder via Wi-Fi to a SELENE form (our computer programme).
- Request for blood products with the double check on the form or consult the SELENE blood bank to avoid the use of paper.
- Individualisation of the need for consumables and diagnostic tests, both analytical and radiological tests.

- Individualised monitoring needs. Night mode of screens to save energy.
- 'Choose wisely' initiative: consider useful measures daily, rethink therapeutic objectives and in accordance with the patient's wishes (Auriemma 2019). Recommendations NOT TO DO in both adults and paediatrics (SEMICYUC 2019-Hernandez 2023).

Early detection

- Early detection of patients at risk, fewer ICU admissions due to optimisation of management on the ward or earlier admissions in ICU resulting in shorter stays due to less pre-ICU deterioration, and fewer readmissions due to post-ICU surveillance. The above, thanks to HEWS-type programmes (Abella 2023), would lead to lower resource consumption and waste generation.
- Early detection of MMR would lead to avoiding outbreaks with the consequent lower consumption of resources and generation of waste derived from the necessary isolations.
- Early detection of professional burnout with an adequate professional ratio to help continuous process improvement.

Better health care

- Training in our generated environmental effects and strategies to minimise them.
- Doing our healthcare right the first time: diagnosis, choice of antibiotics, surgery, avoiding malnutrition, etc. (Fang 2022). This would avoid complications, increased length of

Less infections with UTI campaigns, pneumonia, bacteraemia zero to avoid use of more resources (in their microbiological diagnosis, treatment, and ICU stays)	Individualise daily sedation and NMB, fewer days of MV, less critical patient weakness
DDS to avoid VAP	Start early rehabilitation, to avoid deconditioning or appearance of sore ulcers
Discontinue/de-escalate antibiotics to avoid MMR or possibility of <i>C. difficile</i> (same with omeprazole)	Dilute in fewer mL I.V.s to avoid both cost and water overload
Controlled indication of certain devices that could be elective, e.g., bladder catheter	Prevention of nephrotoxicity with optimal nephrotoxic titration with levels of nephrotoxic drugs

Table 3. Preventing the acquisition of new disease processes

stay, waste, and costs.

- Digitalisation with access to data from other healthcare centres.
- Optimising monitoring and transmission of all possible data to the P.C. in the unit or via Wi-Fi of isolated patients in the ICU. These would avoid the use of gowns, gloves, etc., by avoiding the need to enter.
- Accurately predict the drugs amounts and which drugs we are going to use in our actions.
- Preventing the acquisition of new disease processes other than those that have led to their admission (Table 3).
- Improve information transmission (I.T.) to avoid duplication, errors or readmissions at the time of I.T. on transfer to the ward.
- Better menus adapted to disease and type of patient to avoid food wastage.
- Fewer changes in home treatment patterns and quicker reconciliation.

Persons

Health professionals

- Approach by healthcare professionals (Bein 2021) legal regulations and policies with a three-pronged strategy: ecological, social, and financial.
- Creation of "Green teams" with bottom-up initiatives (Bein 2023). Lead for coordinated work, being a collaborative and interprofessional work.
- Reducing therapeutic futility (Bein 2023). Intensive care interventions that prolong life without achieving effective patient-centred care are futile. Futile treatment brings harm to patients and caregivers, to the payer/taxpayer and to our environment. Ethical, ecological, and best clinical practice principles are often synonymous. Futility undermines human dignity and ecological ethics.
- Detection of areas for improvement in our daily life as hot spots (Table 4).
- On-call pass: optimising times for assistance and optimising transmission of information. (Salinas 2022)
- Zero waste in the staff room (reusable cups and bottles).

Early identification of delirium, physical deconditioning, and malnutrition	Optimising the use of consumables: number of gloves, gowns, soakers, etc., used per shift
Non-punitive and standardised report of adverse events and immediate registration for immediate resolution in the short term and avoidance in the medium/long term	Reduce the volume of blood drawn for blood tests, which would reduce the need for blood products
Indicate pharmacological and non-pharmacological treatments, monitoring, sustainable diagnostic and therapeutic techniques	Measures to avoid transmission of transmissible diseases with patients: needles with covers; with other professionals: adequate rest areas; vaccination

Table 4: Detecting hot spots

- Minimise staff travels.
- Calculate personal carbon footprint. Training and evaluation with CME/CPD activities for BJA Education subscribers.

Patients, families, and society

- The decision to admit or not a patient to ICU leaves its footprint on the planet either by promoting health (in the case of an appropriate and timely admission) or by deciding not to admit a patient in the case of futility, in the context of "non-maleficence" by avoiding further carbon footprint, waste, expense etc.
- Promote public health to reduce the need for healthcare or use of pharmaceuticals (Bein 2023). Educate on healthy lifestyles. Actively involve patients and families in the prevention of chronic and acute diseases (pandemics).
- Optimise preoperative and postoperative care (Lobo 2020), promote adherence to the Stockholm 'Wise List' of treatments, and not prescribe non-recommended treatments (Erik-

sen 2017).

- Family and patient education in self-care (diabetes, CVC, stomas, tracheostomies).
- Knowing what or how far a patient wants to be cared for (Popovich 2023), with shared decision-making. Matching patient and family expectations. Consult or offer the possibility of issuing advance directives.
- Accessibility, by using public transport to visit relatives in the hospital or for medical consultations.

Planet

The planet needs ecological management of the energy, waste, and consumables we use in our daily practice. The 10 R's stand for reject, rethink, reduce, reuse, repair, refurbish, remanufacture, reuse, recycle and recover. Globally, medical waste accounts for 4% of all plastic waste. During the COVID-19 pandemic, it accounted for 23% of total NHS waste. For a practical approach, we will break it down into the mantra (Bein 2023) of first, reduce waste; second, reuse if possible; and third, recycle.

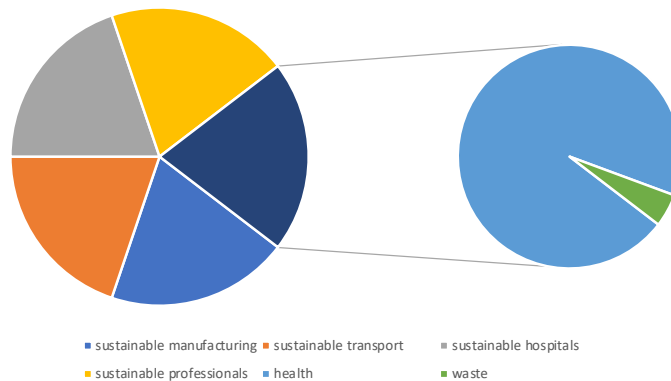


Figure 1. Green teams as a projection of a sustainability chain

Lighting: ICU design; more natural light from windows and non-lower floors, less use of artificial light and can be adapted to ambient light, change to LED lights, electricity from solar panels or other renewable energy.	Ventilation and air conditioning. Power-up and down ICU air exchange rates according to differing ICU patient numbers, and power down unoccupied single-use/ negative pressure rooms.
Heating: individual thermostats, doors closed, less loss of heat/cold needed in the unit.	Transfers and electric car charging points in the garage to reduce fossil fuel consumption.

Table 5. Reduction and responsible use of energy

Reduce

- Transition from carbonised energy systems to renewables to achieve an energy refurbishment of our buildings.
- Energy efficiency, reduction, and responsible use of energy (Table 5) (Hufing 2014).

Reduction of:

- Machines. MV-NIV devices and other machines with the best energy rating. Innovative technologies that cover a real need. Not being hostage to programmed obsolescence. Biomedical engineer available to make repairs.
- Fungibles: less waste generation by reducing the use of gloves and gowns.
- The type of packaging of our products.
- Paper and recycle, information to relatives on large posters at the entrance and Q.R. reading with instructions for visits, etc.
- Protocols and instructions for equipment, accessible by reading Q.R. codes or training pills in the hospital's continuous training app.

Reuse

- Circular management from fibro-bronchoscopes, dressing boxes, NIV interfaces to packaging.
- Maximise the reuse of laundry linen for the same or other purposes.

Recycle

- "SIGRE point" SIGRE (non-profit entity in charge of guaranteeing the correct environmental management of the containers and remains of medicines that are generated in homes). Launched

in 2001, the result of collaboration between the pharmaceutical industry, pharmacies, and pharmaceutical distribution companies, to be an effective and efficient model for medicines in solid or liquid formulations following safe disposal protocols, especially for antibiotics.

- Differentiated disposal in containers for glass, paper/cardboard, plastic, organic, batteries, and toners.
- Safe disposal of toxic materials, biohazardous materials, sharps, etc.
- Safe disposal of stool, diuresis (especially 24 hours after administration of contrasts), and patient bleeding, by means of appropriate filtering and treatment prior to disposal.
- Use of biodegradable materials
- Safe incineration

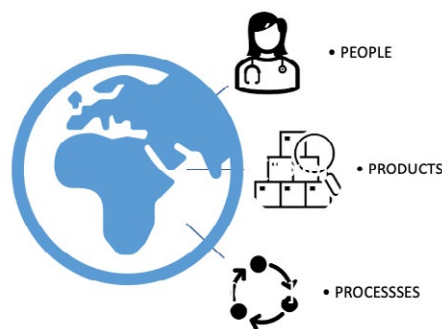


Figure 2. ICU-4P's: Planet, people, processes, and products

Conclusion

People have created the problem, and people must commit themselves to solving it. It is an ambitious plan that requires a mobilised society because of the scale of this crisis to be able to solve it successfully.

Healthcare professionals, in addition to caring for our patients, can care for our planet in our day-to-day work by developing zero-carbon ICUs immersed in sustainable, more efficient, and cost-effective healthcare systems. There should be no ethical dilemma between the beneficence of health promotion and the non-maleficence of avoiding the deterioration of our planet.

We must plan and execute better processes to bring about real change in the quality of life for present and future generations in balance with the planet. To maintain that balance, we must move towards this shared goal. It is not an option to not accomplish it.

Conflict of Interest

None. ■

Abbreviations

ANZICS: Australian and New Zealand Intensive Care Society
 BTEX: benzene, toluene, ethylbenzene, and xylene.
 CME/CPD: Continuing Medical Education/ Continuing Professional Development
 CO₂: carbon dioxide
 CO₂e: Carbon Dioxide Equivalent
 CVC: central venous catheter
 EDTA: Ethylenediaminetetraacetic acid
 GHGs: Greenhouse gases
 GOSHs: Gloves Off Campaign of the Great Ormond Street Hospital
 GREEN ICU: GREater ENvironmental sustainability in Intensive Care Units
 HEWS: Henares early warning score.
 ICU: Intensive Care Unit
 ISO: International Organization for Standardization
 LCA: Life cycle analysis
 LED: Light-emitting diode
 MDR/MRO: Multidrug-resistant Organisms
 MFA: Material flow analysis
 MV: Mechanical Ventilation
 M.W.: molecular weight
 NHS: National Health Service
 NIV: Non-invasive ventilation
 NMB: Neuromuscular Blockade
 PPE: Personal Protective Equipment
 SDD: Selective Decontamination of the Digestive tract
 UTI: Urinary Tract Infection
 VAP: Ventilator-associated Pneumonia

References

For full references and other links of interest, please email editorial@icu-management.org or visit <https://iii.hm/1kjr>



Marlies Ostermann

King's College London
Guy's & St Thomas' Hospital
Department of Critical Care
London, UK

marlies.ostermann@gstt.nhs.uk

Call for a Green ICU

Intensive care units are carbon hotspots that contribute three times the GHG emissions as acute care units per bed day. Clinical staff must be aware of GHG production's impact and potential mitigations. This article summarises key points and initiatives to make this happen.

Healthcare contributes approximately 5% of worldwide greenhouse gas (GHG) production (Lenzen et al. 2020). Some regional variation exists. For instance, in the United States, the carbon footprint of the healthcare system is approximately 10% of the national GHG emissions compared to 7% in Australia (Eckelman et al. 2020; Malik et al. 2018). Within healthcare systems, hospitals and pharmaceutical sectors combined have the largest carbon footprint (approximately 60%), and within hospitals, intensive care units (ICUs) are carbon hotspots contributing three times the GHG emissions as acute care units per bed day (Prasad et al. 2022). The reasons are high staff activity, high use of technical and non-technical resources, and high energy demands. Further, approximately 10% of healthcare is considered harmful, and 30% is low-value care (Barratt et al. 2022), and yet they contribute to GHG emissions.

It is vital for clinical staff to be aware of the impact of GHG production and potential mitigations. Very timely, the journal *Intensive Care Medicine* launched a new series, "My Green ICU", led by Professor T Bein and Professor F McGain (Bein and McGain 2023). In their introductory editorial, they highlighted several important points and initiatives:

1. Green Teams

The development of integrated, multifaceted, collegial 'Green teams' in ICU has proven to be very successful and integral to sustainability (Trent et al. 2023; Huffling and Schenk 2014). Such initiatives often started with one or two individuals who addressed a particular issue (e.g. use of gloves, cessation of intravenous antibiotics) and then expanded to larger teams and sometimes up to hospital administrators

and beyond (bottom-up approach). Where implemented, they have been shown to be vital to harnessing employee expertise, motivating, educating and finding new and better ways to a more sustainable practice (Trent et al. 2023).

2. Reduction of Energy Use

In general, a significant long-term reduction of the intensive care carbon footprint will be achieved by preventing serious illnesses and reducing people's need for ICU admission. Thus, preventive medicine per se is an important strategy towards sustainability. In addition, ICUs should be

▲▲ the development of integrated, multifaceted, collegial Green teams in ICU has proven to be very successful and integral to sustainability ►►

provided with regular information on their energy expenditure, from heating, lighting and ventilation to air-conditioning (Bein and McGain 2023). This offers opportunities to identify both initiatives to save energy and water and strategies to reduce waste. Patient care may improve, too. For instance, there is a correlation between noise levels and sleep disturbance and ICU delirium.

3. Life Cycle Assessments

Life cycle assessments (LCAs) are scientific methods to analyse the environmental and financial footprints of products and processes (Bein and McGain 2023). LCAs already exist for specific ICU devices, e.g. face masks and breathing circuits, and

also for ICU medications but should be routinely undertaken. As an example, changes in supply stocking resulted in an 80% reduction in the amount of unused equipment waste in a 16-bed ICU in Canada (Yu and Baharmand 2021).

4. ICU Recycling

Quantification of total ICU waste has not been systematically investigated, but data from specific areas exist. For instance, half of the drugs drawn up for emergencies end up being discarded unused (Atcheson et al. 2016). Further, it is estimated that approximately 50% of waste could be recyclable (McGain et al. 2009). The introduction of recycling stations and improved waste practices in a 14-bed ICU in Australia resulted in 5 tonnes of comingled resources to be diverted from landfill (Department of Health and Human Services, Melbourne, Victoria 2016)

5. Less is More

A 'less is more' philosophy has been advocated in recent years, including calls for daily consideration of measures to de-escalate therapies, prescription of sensible therapeutic goals, and avoidance of inappropriate tests and therapies (Department of Health and Human Services, Melbourne Victoria 2016; Singer 2022; Darmon et al. 2019; Zampieri and Einav 2019). To achieve this, regular audits of clinical practice are needed to evaluate compliance with the latest evidence and standards. Further, more research and scientific evidence are required to identify "less of what", for instance, to support a transition from over-testing and over-treating to effective and appropriate testing and treating, in line with more sustainable clinical practice (Darmon et al. 2019).

6. Avoidance of Futility

Critical care interventions that prolong life without achieving effective patient-centred care are considered futile and expensive. Avoidance of futile treatment is beneficial, saves money that can be used to support other patients, and is climate protective (Bein and McGain 2023).

The “My Green ICU” series in Intensive

Care Medicine serves to encourage all healthcare staff, particularly those who work in the ICU, to join the race to zero carbon emissions and to promote planetary health as a framework for sustainable health systems (Bein and McGain 2023).

Conflict of Interest

None. ■

References

- Atcheson CL, Spivack J, Williams R, Bryson EO (2016) Preventable drug waste among anesthesia providers: opportunities for efficiency. *J Clin Anesth.* 30:24-32.
- Barratt AL, Bell KJ, Charlesworth K, McGain F (2022) High value health care is low carbon health care. *Med J Aust.* 216(2):67-68.
- Bein T, McGain F (2023) Climate responsibilities in intensive care medicine—let’s go green! An introduction to a new series in Intensive Care Medicine. *Intensive Care Med.* 49(1):62-64.
- Darmon M, Benoit DD, Ostermann M (2019) Less is more: ten reasons for considering to discontinue unproven interventions. *Intensive Care Med.* 45(11):1626-1628.
- Eckelman MJ, Huang K, Lagasse R et al. (2020) Health Care Pollution And Public Health Damage In The United States: An Update. *Health Aff (Millwood).* 39(12):2071-2079.
- Huffling K, Schenk E (2014) Environmental sustainability in the intensive care unit: challenges and solutions. *Crit Care Nurs Q.* 37(3):235-250.
- Lenzen M, Malik A, Li M et al. (2020) The environmental footprint of health care: a global assessment. *Lancet Planet Health.* 4(7):e271-e279.
- Malik A, Lenzen M, McAlister S, McGain F (2018) The carbon footprint of Australian health care. *Lancet Planet Health.* 2(1):e27-e35.
- McGain E, Hendel SA, Story DA (2009) An audit of potentially recyclable waste from anaesthetic practice. *Anaesth Intensive Care.* 37(5):820-823.
- Prasad P, Joshi D, Lighter J et al. (2022) Environmental footprint of regular and intensive inpatient care in a large US hospital. *The International Journal of Life Cycle Assessment.* 27(1):38-49.
- Singer M (2022) Less Haste, More Speed, More Science: Lessons to be Learned from COVID-19 Studies. *Am J Respir Crit Care Med.* 205(11):1258-1260.
- Staff-driven sustainability initiatives - Dandenong Hospital: Case study: Conversation Series 3 (2016) Department of Health and Human Services, Melbourne Victoria. Available at <https://nla.gov.au/nla.obj-1539707980/view>
- Trent L, Law J, Grimaldi D (2023) Create intensive care green teams, there is no time to waste. *Intensive Care Medicine.* 49(4):440-443.
- Vincent JL, Creteur J (2019) Critical care medicine in 2050: less invasive, more connected, and personalized. *J Thorac Dis.* 11(1):335-338.
- Yu A, Baharmand I (2021) Environmental Sustainability in Canadian Critical Care: A Nationwide Survey Study on Medical Waste Management. *Healthc Q.* 23(4):39-45.
- Zampieri FG, Einav S (2019) When will less monitoring and diagnostic testing benefit the patient more? *Intensive Care Med.* 45(10):1447-1450.



Matthieu Bernat

Service d'anesthésie et de réanimation
Hôpital Nord
Assistance Publique Hôpitaux Universitaires de Marseille
Aix Marseille Université
Marseille, France
matthieu.bernat@ap-hm.fr



Emmanuelle Hammad

Service d'anesthésie et de réanimation
Hôpital Nord
Assistance Publique Hôpitaux Universitaires de Marseille
Aix Marseille Université
Marseille, France
emmanuelle.hammad@ap-hm.fr



Laurent Zieleskiewicz

Service d'anesthésie et de réanimation
Hôpital Nord
Assistance Publique Hôpitaux Universitaires de Marseille
Aix Marseille Université
Marseille, France
laurent.zieleskiewicz@ap-hm.fr



Marc Leone

Service d'anesthésie et de réanimation
Hôpital Nord
Assistance Publique Hôpitaux Universitaires de Marseille
Aix Marseille Université
Marseille, France
marc.leone@ap-hm.fr
@MarcLeone8

Environmental Impact in Critical Care

The climate crisis is a threat to global health. The temperature of the atmosphere has been rising exponentially since the industrial revolution due to anthropogenic greenhouse gas emissions. The Intergovernmental Panel on Climate Change special report estimates that a drastic reduction in these emissions is required to limit global warming and its consequences on human health. The Paris Agreement, which was signed in 2015 proposed to limit warming in 2050 to +1.5°C compared to the pre-industrial era.

While the Hippocratic oath to “first do

Carbon Footprint in ICU: A New Meaningful Outcome in Research Trials

Reducing the carbon footprint in healthcare is a requirement for guaranteeing the best future for humanity. Here we suggest that the carbon footprint be assessed as a potential endpoint for future trials in critical care.

no harm” guides physician practice, the healthcare system is a major contributor to climate change (Lenzen et al. 2020). In industrialised countries, it is responsible for 3 to 10% of national greenhouse gas emissions. The carbon footprint of health systems should be calculated in each country in order to implement targeted measures to reduce it (Booth 2022). An Australian study performed from 2014 to 2015 highlighted that the carbon footprint attributed to healthcare in Australia was 7% (Malik et al. 2022). This covers a broad range of activities such as building supplies, patient travel, staff commute, medicines and chemicals, medical devices, non-medical equipment, and other supply chain actions. NHS England estimated that pharmaceuticals and medical devices represented around 20% and 10% of the total carbon footprint of their healthcare system (NHS England 2020).

The reference unit used to account for greenhouse gas emissions is the carbon dioxide (CO₂) equivalent (CO₂-e). This corresponds to the warming power of each greenhouse gas relative to CO₂, which is the reference gas. In the hospital, efforts are required in all sectors. In the operating room, halogenated gases are strong producers of greenhouse gas emissions. Chambrin et al. showed that the setup of sustainable anaesthesia groups, providing information meetings about the carbon footprint of inhaled halogenated anaesthetics, was associated with a significant decrease in the carbon footprint related to halogenated anaesthetics (Chambrin et al. 2023). In the field of pulmonary diseases,

the change in pressurised metered dose inhalers provided better treatment and outcomes while reducing greenhouse gas emissions (Pernigotti et al. 2021).

Intensive care units (ICUs) are important consumers of material and energy resources. Their greenhouse gas emissions are thus particularly high, representing, in an observational study conducted in a U.S. hospital, 1% of the hospital total by relative staffing intensity (Prasad et al. 2022). In a study of patients in septic shock, McGain et al. (2018) calculated the average daily greenhouse gas emissions in ICUs at Barnes Jewish Hospital, St. Louis, MO, U.S. and Footscray Hospital, Melbourne, Vic, Australia (McGain et al. 2018). They found that the daily greenhouse gas emissions were 178 kg CO₂-e and 88 kg CO₂-e in the U.S. and Australian ICUs, respectively. They concluded that the carbon footprints of the ICUs were mainly dependent on the energy used for heating, ventilation and air conditioning. Another estimate of the carbon footprint in a U.S. hospital showed 138 kg CO₂-e per bed day for ICU patients (Prasad et al. 2022). This corresponds to the emissions of a car driven 500 to 1000 km per patient per day (Figure 1). This made consumables, which have been regarded in non-ICU studies, relatively less important in this setting.

Beyond CO₂, other environmental factors should be considered: air, soil and water pollution, ecotoxicity of drugs, and excessive water consumption. In an ICU of a U.S. hospital, it was calculated that 300L of water usage and 4 m² of agricultural land occupation were used per patient and per

day (Hunfeld et al. 2023). Five practices were clearly identified as having a strong impact on the environment: non-sterile gloves, isolation gowns, bed liners, surgical masks and syringes. Regarding those multiple categories of pollution, decision-makers have to rank their importance and choose their poison. As climate change is an existential risk to each of us, it has been ranked as the impact category of greatest concern in a long-term perspective. At a time of climate crisis, we consider that this impact should no longer be ignored when evaluating our practices (Muret et al. 2019). The scientific literature should include it as an outcome in its own right.

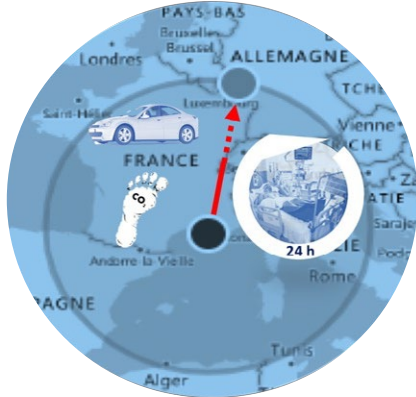


Figure 1. One day in the ICU corresponds to the carbon footprint of a car driven at a range of 500 to 1000 km per patient

Towards a New Meaningful Outcome in Clinical Research

Clinical research needs to assess procedures, treatments, and strategies based on defined outcomes. For critically ill patients, mortality – in-ICU, in-hospital, at day-28, at day-90 – is the most often measured outcome. In a recent study, ICU mortality was approximately 20%, with an additional mortality rate of 17% in the year after ICU discharge, making this outcome really accurate (Atramont et al. 2019). However, other outcomes can also be relevant. Indeed, quality of life may be impaired after surviving a critical illness; hence, quality of life should be considered among potential outcomes in ICU patients (Herridge and Azoulay 2023). To integrate this aspect in the analysis of outcomes, days

at home could be considered an important patient-centred outcome in future critical care trials (Martin et al. 2023). For specific treatments, procedures or strategies, the measure of costs of the ICU stay, under the labelling pharmaco-economic studies, served as an outcome (Oude Lansink-Hartgring et al. 2023). The choice between two strategies that are similar in terms of clinical outcomes may be driven by a reduction in costs associated with one of these strategies.

In our view, the carbon footprint of an ICU stay – actually, the carbon footprint of each treatment or procedure during an ICU stay – should be considered as a potential outcome in future critical care trials to affect the medical decision. A think tank – the Shift Project – suggested that the purchase of pharmaceuticals and medical devices should be based on the least environmental impact for a similar level of quality of care. This would make it possible to choose the same quality of care and the most efficient strategy in terms of the environment.

In medical ethics, two different approaches help guide medical decisions. In the deontological approach, individual dignity is at the heart of the process. Everything must be done to respect it. In the utilitarian approach, the aim should be the well-being of the largest number of individuals, even if it means limiting the care of a single individual. This is usually the approach preferred in a health crisis, such as the COVID-19 crisis. In fact, we are crossing a climate crisis, which is confirmed by a series of evidence. Applying the utilitarian approach to this crisis should lead us to think about the excessive environmental impact of strategies which do not systematically affect patient outcomes.

Barratt and McGain (2021) elegantly put into question the impact of overdiagnosis – detection of harmless conditions that could be safely left underdiagnosed and untreated – on the environment, suggesting that climate change requires efforts to improve the relevance of care. In a comparative non-randomised clinical trial, the use of a portable ultrasound device increased the rate of immediate adequate diagnosis from

80% to 94%. In parallel, there was a decrease in supplemental examinations and the number of interventions, probably reducing the carbon footprint for each patient associated with improved outcomes (Zieleskiewicz et al. 2021). The balance between the benefit and risks of each decision should be assessed on an environmental scale. Obviously, it is unthinkable at this time to reduce the quality of care to reduce our environmental impact. Nevertheless, we believe that, for the same quality of care, the least polluting strategy should always be preferred in the management of intensive care patients.

In the long term, this approach also has a positive impact on public health. Indeed, recent data show that there are health co-benefits to implementing environmental policies. These data show that the implementation of environmental policies is accompanied by co-benefits on the health of the population (Milner et al. 2023). For example, some modelling-studies have shown that reducing the use of coal for electricity generation will result in health benefits that exceed the economic cost of decarbonisation policies through reduced local air pollution.

Whereas its goal is to ameliorate the global health of populations, healthcare systems participate in increasing GHG emissions, which have, in turn, detrimental effects on the health of populations. Our generations have to break this vicious circle by reducing these emissions without deteriorating the level of care. This dual accountability invites reassessing the procedures in critical care under the light of GHG emission reduction. This implies not only choosing the less consuming procedures but also improving the diagnosis accuracy and avoiding overdiagnosis, leading to no unnecessary investigations and treatments. Finally, we propose to include the carbon footprint as a pharmaco-ecological outcome for future clinical trials to determine the best strategies both at the patient and collective levels.

Conflict of Interest

None. ■

References

For full references and other links of interest, please email editorial@icu-management.org or visit <https://iii.hm/1kts>



Orlando R Pérez-Nieto

Intensive Care Unit
Hospital General San Juan del Río
Querétaro, Mexico
orlando_rpn@hotmail.com
@OrlandoRPN



Daniela Cuéllar-Mendoza

Intensive Care Unit
San Juan del Río General Hospital
Querétaro, Mexico
cuellarmdan@outlook.com
@Daniela90CM



Cristian U Santillán-Ramírez

Intensive Care Unit
San Juan del Río General Hospital
Querétaro, Mexico
cristianurriel2008@hotmail.com
@Santillan_urriel



Lourdes M Méndez-Martínez

Intensive Care Unit
San Juan del Río General Hospital
Querétaro, Mexico
lmons322@gmail.com
@Monseemtz



Ernesto Deloya-Tomas

Medical Management
San Juan del Río General Hospital
Querétaro, Mexico
deloyajmr@hotmail.com
@E_DeloyaMD



Éder I Zamarrón-López

Éder I. Zamarrón-López
Intensive Care Unit
Mac Tampico Hospital
Tamaulipas, Mexico
ederzamarron@gmail.com
@Ederzamarron

Intravenous Fluids in Critically Ill Patients: When Less is Better

While intravenous fluids have traditionally been a routine treatment for most critically ill patients, many severe pathologies now suggest a preference for conservative fluid therapy over liberal fluid administration.

Introduction

Intravenous fluid resuscitation began in 1832 during the cholera pandemic, improving intravascular volume and electrolyte recovery in patients with severe hypovolaemic shock secondary to dehydration from severe diarrhoea. In critically ill patients, the aim of intravenous fluid therapy is to increase cardiac output to improve macro and microcirculation and the delivery of oxygen to tissues (DO_2). However, volume status is only one of the determinants for DO_2 , and paradoxically, there is dilution of oxygen with fluid overload, in addition to multiple adverse effects (Pérez-Nieto et al. 2021; Messina et al. 2022). Therefore, it is important to determine to whom, when, and how much intravenous fluids to administer, as their routine and excessive use is associated with poor outcomes, such as increased mortality, mechanical ventilation (MV) days, and acute kidney injury (AKI) (Pérez-Nieto et al. 2021).

In this review, we will discuss the aspects of intravenous fluid therapy in different scenarios with the aim of promoting rational use. Doing so involves reducing the use of unnecessary resources, resulting in lower expenditure on crystalloid fluids and lower costs due to their possible complications.

Fluids in Sepsis and Septic Shock

The Surviving Sepsis Campaign recommendation for the initial management of septic shock is to administer at least 30 ml/kg of intravenous fluids during the first three hours of resuscitation; however, the quality of evidence supporting this practice

is low (Dellinger et al. 2021). Adequate fluid response is commonly defined as an increase in preload induced by a fluid infusion that generates an increase in stroke volume (SV) and hence cardiac output (CO) by more than 10-15%, and one of the major limitations is the lack of continuous CO measuring devices for all critically ill patients (Pérez-Nieto et al. 2019).

Initially, it has been shown that only about 50% of critically ill patients will be adequately responsive to intravenous fluid therapy, and in those sepsis patients who are initially fluid responsive, the probability of a beneficial response decreases rapidly to less than 5% within the first eight hours after resuscitation onset, according to a post-hoc analysis of the ANDROMEDA SHOCK study (Kattan et al. 2020). Patients who do not tolerate fluids adequately may develop congestion and overload with any extra amount of fluids administered (Pérez-Nieto et al. 2021).

In recent years, important studies on fluid therapy in sepsis have been conducted. The randomised controlled CLOVERS trial compared a restrictive fluid resuscitation strategy (500 to 2,300 ml) with concomitant use of vasopressors versus a liberal fluid strategy (2,000 to 4,500 ml) before initiating vasopressors. A lower total fluid administration during the first 24 hours was demonstrated in the restrictive group, with no differences in mortality at 90 days. Therefore, higher IV fluid intake was not associated with better outcomes but with increased use of crystalloid solutions. A cost analysis could be suggested to evaluate

the economic impact of liberal practice.

Instead of initiating IV fluid resuscitation, early norepinephrine infusion to achieve a mean arterial pressure (MAP) >65 mmHg may be associated with better outcomes when compared to delayed initiation of the vasopressor, including increased survival and less IV fluid input (Colon et al. 2020; Rui Shi et al. 2020).

In terms of fluid preference, despite the theoretical benefits of using balanced solutions (PlasmaLyte, Ringer lactate, Hartmann) that may include lower incidence of hyperchloraemia and metabolic acidosis, multiple studies in the last years have failed to demonstrate superiority in important outcomes such as mortality or development of AKI when comparing 0.9% sodium chloride solution with different types of balanced solutions (Hammond et al. 2020; Monnet et al. 2023), and the cost of the latter is commonly higher (Taylor et al. 2021).

Another circumstance to consider is the source of infection. For example, a patient with abdominal sepsis with nausea, vomiting, and poor fluid intake prior to admission is more likely to respond to IV fluids, while a patient with severe viral pneumonia is less likely to benefit from them and is more susceptible to local damage.

In summary, the benefit of administering large amounts of intravenous fluids in patients with sepsis and septic shock has been questioned in the last decade, and the recommendation for this strategy has lost strength. We suggest that the clinical benefit of fluid therapy in each patient should be weighed, considering their comorbidities, haemodynamic status, and source of infection.

Fluids in Acute Respiratory Distress Syndrome

An important pathophysiological characteristic in the development of acute respiratory distress syndrome (ARDS) is an increase in the permeability of the alveolar-capillary membrane, allowing intravascular fluid to leak into the interstitial and alveolar space, causing pulmonary oedema and gas exchange impairment (Vignon et

al. 2020). A common problem in these patients is that several causes of ARDS are accompanied by hypotension and shock (e.g., severe pneumonia, septic shock, severe pancreatitis, thoracic trauma, etc.), which implies the use of large amounts of intravenous fluids in some cases to restore intravascular volume, but with the secondary effect of increasing extravascular lung water (EVLW) and worsening hypoxaemia.

Improved lung function and decreased days on mechanical ventilation and ICU have been shown with a conservative fluid therapy approach in patients with ARDS, allowing the use of furosemide versus a liberal therapy. There was no difference in mortality or development of organ failure in the conservative group. There is a positive correlation between cumulative fluid balance and mortality and ICU stay in patients with ARDS (Van Mourik et al. 2019). The current recommendation for fluid management in ARDS is to provide conservative therapy (Griffith et al. 2019).

Fluids in Acute Pancreatitis

Acute pancreatitis is characterised by a significant release of proinflammatory cytokines locally and then systemically, which causes microcirculatory damage due to endothelial injury. Initially, it presents with increased CO, but during its progression, hypotension and shock may develop due to cytokine-mediated vasodilation (Crosignani et al. 2022). Various factors can contribute to fluid loss in pancreatitis, including vomiting, feeding difficulty, abdominal pain, systemic inflammation, and fever, which are associated with increased vascular permeability and outflow of intravascular fluid into the interstitial spaces and serosa (pleura, peritoneum), leading to distributive shock with a hypovolaemic component (Crosignani et al. 2022). This circulatory disturbance contributes to tissue hypoperfusion and favours organ failure (Sureka et al. 2016).

Researchers postulated two decades ago that aggressive intravenous fluid therapy could improve pancreatic perfusion and prevent necrosis in patients with mild and moderate pancreatitis. However, this theory could not be proven, and considering the

latest studies, we have strong findings against this type of management.

Ten years ago, management guidelines for acute pancreatitis recommended aggressive intravenous fluid therapy at a dose of 250 to 500 mL of crystalloid solution per hour for the first 12 to 24 hours (Tenner et al. 2013). More recent recommendations suggest using fluid therapy and monitoring patients for signs of fluid overload without specifying the infusion dose during the first 72 hours. Emphasis is placed on replacing volume lost due to intolerance of the oral route and second- or third-space leakage.

However, in patients with pancreatitis, excessive fluid intake can increase the risk of elevated intra-abdominal pressure (IAP) and cause abdominal compartment syndrome, which can worsen cardiovascular, renal, intestinal, and pulmonary dysfunction and increase the risk of mortality (DeLaet et al. 2020). The most recent proposal for the resuscitation of patients with pancreatitis is goal-guided resuscitation, and the use of ultrasonography to identify evidence of venous congestion may be useful (Argaiz et al. 2021).

A recently published randomised controlled trial evaluating a conservative fluid strategy compared to aggressive fluid therapy in the first hours of care for patients with acute pancreatitis could not demonstrate benefit to prevent the progression of disease severity with aggressive fluid intake; however, it did demonstrate a greater quantity of intravenous solutions administered and an increased incidence of rales (de-Madaria et al. 2022).

Other studies report similar findings. A systematic review of randomised controlled trials with meta-analysis found an increase in mortality and complications caused by fluid overload in patients with acute pancreatitis who were managed with aggressive fluid therapy, regardless of its degree of severity, compared to conservative fluid therapy (Li et al. 2023).

Fluids in Diabetic Ketoacidosis

Diabetic ketoacidosis (DKA) is a serious complication of diabetes caused by an increase in serum ketones as a way of obtaining energy during acute stress and a

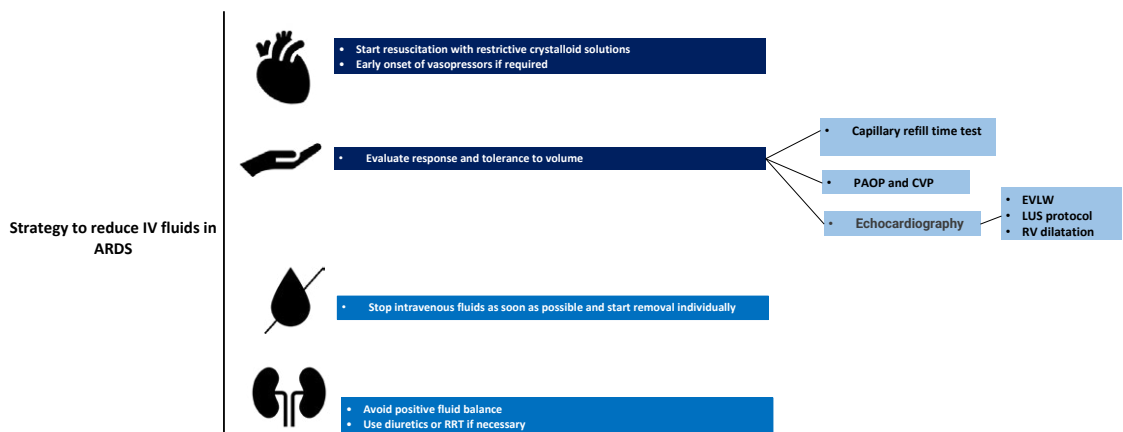
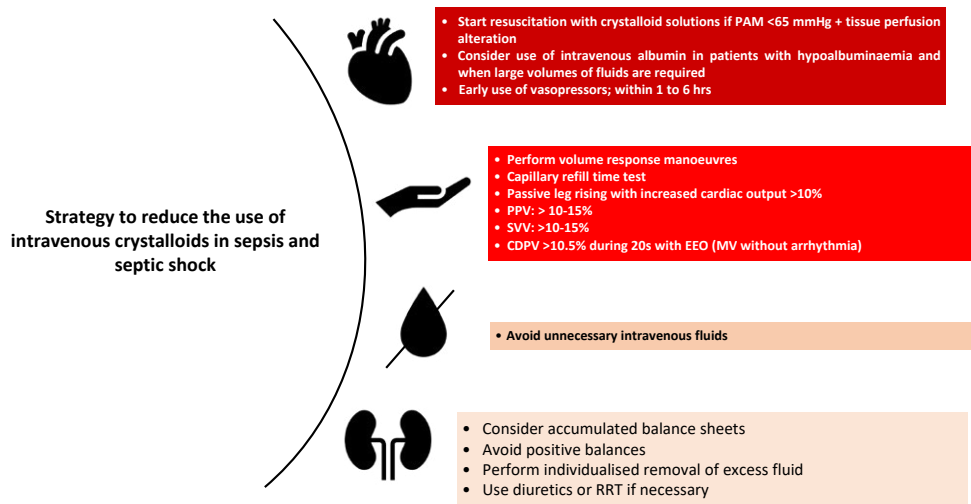
significant decrease in insulin levels, either pancreatic or due to inappropriate treatment, culminating in metabolic acidosis, sustained hyperglycaemia, dehydration from osmotic diuresis, nausea and vomiting. Guideline-recommended treatment includes the aggressive infusion of intravenous fluids, electrolyte replacement, and insulin administration. The current recommendation is to administer an infusion of 500 mL of 0.9% sodium chloride solution to achieve a systolic blood pressure >90 mmHg, followed by 1,000 mL over 1 hour, then 1,000 mL over 2 hours, and finally 1,000 mL over 4 hours, with concurrent potassium replacement. This is based on the replacement of lost fluids, estimated at 100 ml/kg, a completely arbitrary measure. It's worth mentioning that no studies

support this recommendation, despite the recommendation being universally approved (Dhatariya et al. 2022). We must remember that patients with DKA are not exempt from complications associated with fluid overload, such as pulmonary oedema (Sprung et al. 1980).

A systematic review of randomised controlled trials on patients younger than 18 years with DKA, comparing liberal and rapid infusions of IV fluids to conservative and slow therapy, found no clear benefit of one therapy over the other nor an increased incidence of major adverse effects like cerebral or pulmonary oedema. However, the liberal group showed a higher incidence of hyperchloraemic acidosis and hypocalcaemia (Long and Gottlieb 2022). No similar studies have been conducted

on adult patients.

Regarding the type of solution administered, balanced solutions generate greater benefits for patients with DKA when compared to sodium chloride solution. The SKOPE-DKA study demonstrated a decrease in the resolution time of ketoacidosis symptoms without presenting a significant difference in complications when balanced solutions were compared to saline solution (Ramana et al. 2021). A recent systematic review of randomised controlled trials comparing saline with balanced crystalloids demonstrated a shorter time to resolution of DKA, fewer length of hospital stays, lower serum chloride levels, and higher bicarbonate levels (Alghamdi et al. 2022).



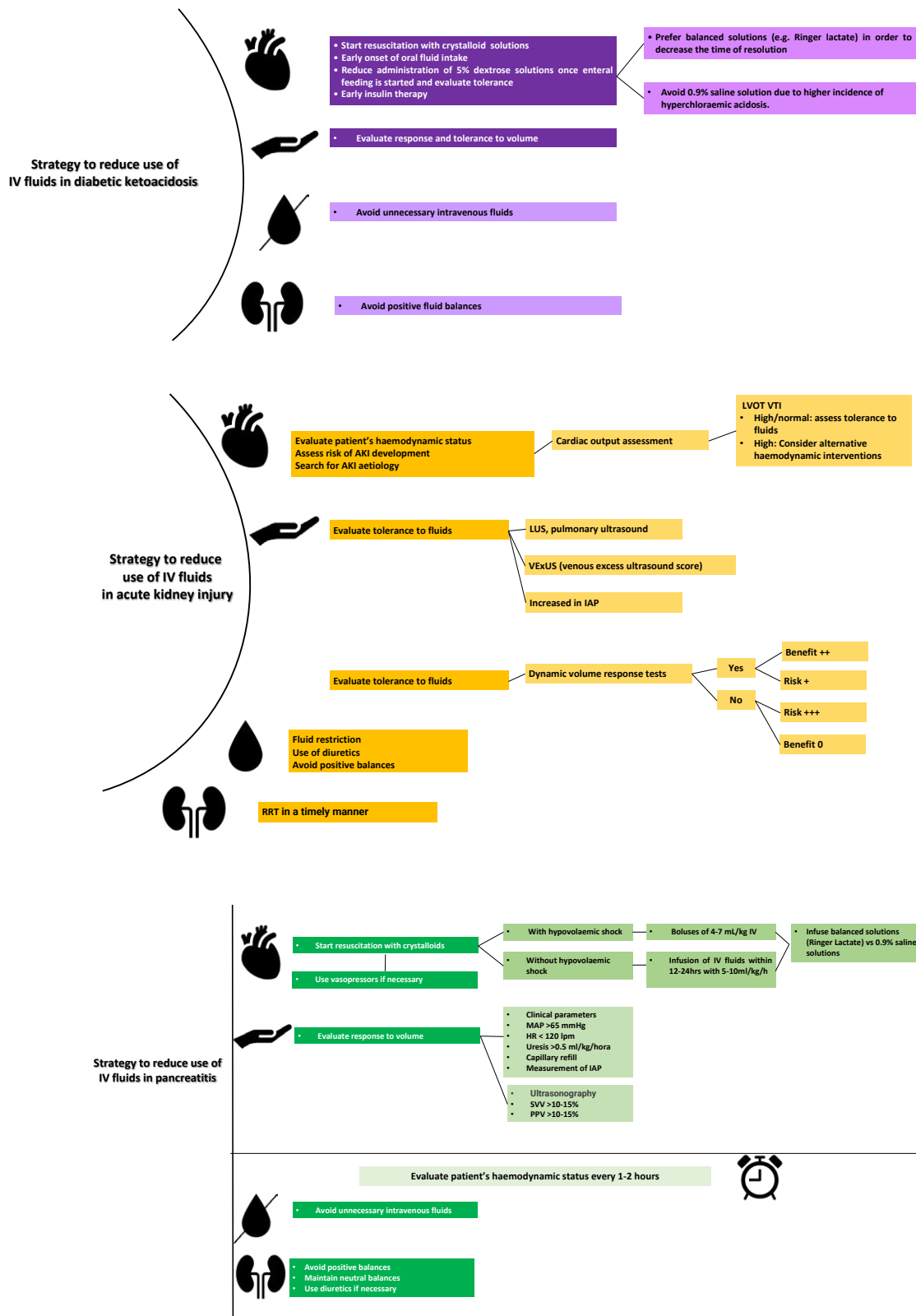


Figure 1. Proposal for the management of intravenous fluid therapy in common scenarios of critically ill patients

Fluids in Acute Kidney Injury

Acute kidney injury (AKI) is a common occurrence in critically ill patients and is an independent factor in mortality, particularly when presenting as oliguria or anuria. According to the multinational AKI EPI study, 57.3% of ICU patients will experience AKI symptoms during their stay, with 23.5% of them requiring renal replacement therapy (RRT). The main causes include sepsis, hypovolaemia, the use of nephrotoxic drugs, cardiogenic shock, hepatorenal syndrome, and obstructive urinary tract problems (Hoste et al. 2015).

Pathophysiologically, when AKI is caused by absolute or relative hypovolaemia, it may improve with the administration of oral, enteral, or IV fluids. However, the idea that AKI from other causes can be treated with intravenous fluid infusion has led to erroneous practices and worsening prognosis for these patients, particularly those who are unresponsive or unable to tolerate them. In addition, fluid overload can worsen or cause AKI by the following mechanisms (Mårtensson and Bellomo 2015):

- a) Activation of tubuloglomerular feedback: the infusion of saline solutions and subsequent administration

of large amounts of chlorine can activate the macula densa, which secretes vasoconstrictor substances from the afferent arteriole. This can decrease renal blood flow and, subsequently, the glomerular filtration rate.

- b) Increased intravascular oncotic pressure: This is generated by the administration of osmotically active substances.
- c) Osmotic nephrosis: This condition is characterised by vacuolisation and oedema of the proximal tubular cells. The most related causal substances are mannitol and hydroxyethyl starch (a synthetic colloid currently not recommended).
- d) Oedema of the renal parenchyma: This generates an increase in the distance needed for the diffusion of oxygen in the nephron, promoting renal ischaemia.

Conclusion

Studies have shown that large amounts of intravenous solutions administered to critically ill patients are of no benefit and are commonly associated with adverse effects, such as AKI, more days on mechanical

ventilation, longer stays in the ICU and hospitalisation, and increased mortality. However, patients with hypovolaemic shock and severe dehydration may benefit from intravenous fluids.

In addition, the acquisition and administration of large quantities of solutions of different types have an economic and ecological impact. The approximate cost per 100 mL of 0.9% sodium chloride solution is £0.47 (\$0.6 USD), while the cost of balanced solutions is higher, with PlasmaLyte being the most expensive, at £2.25 to £3 (\$3-\$4 USD) per 100 mL (Taylor et al. 2021).

A conservative approach to intravenous fluids should be adopted for patients with ARDS, acute pancreatitis, and AKI. It should also be carefully considered in septic shock and other critical illnesses, not only to improve prognosis but also to reduce consumption and spending due to unnecessary interventions. In **Figure 1**, we present a proposal for the management of intravenous fluid therapy in common scenarios of critically ill patients.

Conflict of Interest

None. ■

References

- Alghamdi NA, Major P, Chaudhuri D et al. [2022] Saline Compared to Balanced Crystalloid in Patients With Diabetic Ketoacidosis: A Systematic Review and Meta-Analysis of Randomized Controlled Trials. *Crit Care Explor.* 4(1):e0613.
- Argaiz ER, de Moraes AG [2021] Acute pancreatitis. *Lancet.* 397(10271):279.
- Berthelsen RE, Perner A, Jensen AK et al. [2018] Fluid accumulation during acute kidney injury in the intensive care unit. *Acta Anaesthesiol Scand.* 62(6):780-790.
- Besen BAMP, Boer W, Honore PM [2021] Fluid management in diabetic ketoacidosis: new tricks for old dogs? *Intensive Care Med.* [11]:1312-1314.
- Colon Hidalgo D, Patel J, Masic D et al. [2020] Delayed vasopressor initiation is associated with increased mortality in patients with septic shock. *J Crit Care.* 55:145-148.
- Crosignani A, Spina S, Marrazzo F et al. [2022] Intravenous fluid therapy in patients with severe acute pancreatitis admitted to the intensive care unit: a narrative review. *Ann Intensive Care.* 12(1):98.
- Cuéllar-Monterrubio JE, Monreal-Robles R, González-Moreno EI et al. [2020] Nonaggressive Versus Aggressive Intravenous Fluid Therapy in Acute Pancreatitis With More Than 24 Hours From Disease Onset: A Randomized Controlled Trial. *Pancreas.* 49(4):579-583.
- De Laet IE, Malbrain MLNG, De Waele JJ [2020] A Clinician's Guide to Management of Intra-abdominal Hypertension and Abdominal Compartment Syndrome in Critically Ill Patients. *Crit Care.* 24, 97.
- Dellinger PR, Rhodes A, Evans L et al. [2023] Surviving Sepsis Campaign. *Critical Care Medicine.* 51(4):431-444.
- de-Madaria E, Buxbaum JL, Maisonneuve P et al. [2022] Aggressive or Moderate Fluid Resuscitation in Acute Pancreatitis. *N Engl J Med.* 387(11):989-1000.
- Dhatariya KK; Joint British Diabetes Societies for Inpatient Care [2022] The management of diabetic ketoacidosis in adults-An updated guideline from the Joint British Diabetes Society for Inpatient Care. *Diabet Med.* 39(6):e14788.
- Gardner TB [2022] Fluid Resuscitation in Acute Pancreatitis - Going over the waterfall. *N Engl J Med.* 387(11):1038-1039.
- Geng L, Tian X, Gao Z et al. [2023] Different Concentrations of Albumin Versus Crystalloid in Patients with Sepsis and Septic Shock: A Meta-Analysis of Randomized Clinical Trials. *J Intensive Care Med.* 8850666231170778.
- Gershkovich B, English SW, Doyle MA et al. [2019] Choice of crystalloid fluid in the treatment of hyperglycemic emergencies: a systematic review protocol. *Syst Rev.* 8(1):228.
- Grams ME, Estrella MM, Coresh J et al. [2011] Fluid balance, diuretic use, and mortality in acute kidney injury. *Clin J Am Soc Nephrol.* 6(5):966-73.
- Griffiths MJD, McAuley DF, Perkins GD et al. [2019] Guidelines on the management of acute respiratory distress syndrome. *BMJ Open Respir Res.* 6(1):e000420.
- Hammond DA, Lam SW, Rech MA et al. [2019] Balanced Crystalloids Versus Saline in Critically Ill Adults: A Systematic Review and Meta-analysis. *Ann Pharmacother.* 54(1):5-13.
- Hoste EA, Bagshaw SM, Bellomo R et al. [2015] Epidemiology of acute kidney injury in critically ill patients: the multinational AKI-EPI study. *Intensive Care Med.* 41(8):1411-23.
- Kattan E, Ospina-Tascón GA, Teboul JL et al. [2020] Systematic assessment of fluid responsiveness during early septic shock resuscitation: secondary analysis of the ANDROMEDA-SHOCK trial. *Crit Care.* 24(1):23.
- Lewis SR, Pritchard MW, Evans DJ et al. [2018] Colloids versus crystalloids for fluid resuscitation in critically ill people. *Cochrane Database Syst Rev.* 8(8):CD000567.
- Li XW, Wang CH, Dai JW et al. [2023] Comparison of clinical outcomes between aggressive and non-aggressive intravenous hydration for acute pancreatitis: a systematic review and meta-analysis. *Crit Care.* 27(1):122.
- Long B, Gottlieb M [2022] Liberal versus conservative intravenous fluid administration in pediatric diabetic ketoacidosis. *Academic Emergency Medicine.*
- Mårtensson J, Bellomo R [2015] Are all fluids bad for the kidney? *Curr Opin Crit Care.* 21(4):292-301.
- Matthay MA, Zemans RL, Zimmerman GA et al. [2019] Acute respiratory distress syndrome. *Nat Rev Dis Primers.* 5(1):18.
- Mehta RL, Pascual MT, Soroko S et al. [2004] Spectrum of acute renal failure in the intensive care unit: the PICARD experience. *Kidney Int.* 66(4):1613-21.
- Messina A, Bakker J, Chew M et al. [2022] Pathophysiology of fluid administration in critically ill patients. *Intensive Care Medicine Experimental.* 10, 46.
- Monnet X, Lai C, Teboul JL [2023] How I personalize fluid therapy in septic shock? *Crit Care.* 27(1):123.

For full references, please email editorial@icu-management.org or visit <https://iim.hk1kft>



Vincenzo Russotto

Department of Anesthesia and Intensive Care
University Hospital San Luigi Gonzaga
University of Turin
Italy
vincenzo.russotto@unito.it
@RussottoVin



Francesca Collino

Department of Anesthesia and Intensive Care
AOU Città della Salute e della Scienza
University of Turin
Italy
Francesca.collino@unito.it



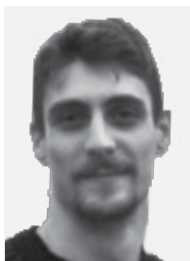
Chiara Sansovini

Department of Anesthesia and Intensive Care
AOU Città della Salute e della Scienza
University of Turin
Italy
sansovinichiara1@gmail.com



Massimo Muraccini

Department of Anesthesia and Intensive Care
AOU Città della Salute e della Scienza
University of Turin
Italy
massimo.muraccini@gmail.com



Marco Francesconi

Department of Anesthesia and Intensive Care
AOU Città della Salute e della Scienza
University of Turin
Italy
marco.francesconi@unito.it



Pietro Caironi

Department of Anesthesia and Intensive Care
University Hospital San Luigi Gonzaga
University of Turin
Italy
pietro.caironi@unito.it

Current Airway Management During Anaesthesia - The STARGATE Study

An overview of the International obServational sTudy on AiRway manaGeMent in operAting room and non-operaTing room anaEsthesia (STARGATE study) that will collect information on peri-intubation adverse events and airway management procedures in adult patients undergoing general anaesthesia to receive surgery or other diagnostic/therapeutic procedures.

Introduction

After two years from the publication of the largest prospective observational study on airway management in critical care, the INTUBE study (Russotto et al. 2021), the same team is launching a new project on airway management during anaesthesia and non-operating room procedures. The International obServational sTudy on AiRway manaGeMent in operAting room and non-operaTing room anaEsthesia (STARGATE study) will collect information on peri-intubation adverse events and airway management procedures in adult patients undergoing general anaesthesia to receive surgery or other diagnostic/therapeutic procedures (e.g. endoscopy, radiologic or cath lab procedures).

The INTUBE Study collected data from almost 3000 intubations in critical care and highlighted the importance of physiology optimisation prior to intubation, given the high incidence of peri-intubation adverse events, mostly cardiovascular collapse, occurring in up to 43% of patients (Russotto et al. 2022). This study also audited the procedure of airway management in critical care, reporting, among other shortcomings, the underuse of capnography to confirm intubation in only 25% of patients (Russotto et al. 2021).

The National Audit Project 4, published in the U.K. in 2011, increased awareness of airway-related adverse events and boosted research on tools to overcome anatomical challenges along with methods to enhance

teamwork and nontechnical skills (Cook et al. 2011).

To date, different trials have been performed on every component of the intubation bundle, from apnoeic oxygenation using high-flow nasal cannula to video laryngoscopy use in different settings of anaesthesia. This amount of evidence has been summarised in several national and international guidelines.

Large international observational studies had the merit of taking a snapshot of real-life practice outside the controlled setting of randomised trials. For different diseases or interventions, they reported heterogeneity of practice across different geographical regions or poor application of current standards of care.

Examples of this are the underrecognition of Acute Respiratory Distress Syndrome (ARDS) and the poor application of the best ventilation strategies, as pointed out by the LUNG-Safe study, or the poor use of protocolised interventions in airway management and the importance of haemodynamics as pointed out by the INTUBE Study (Bellani et al. 2016; Russotto et al. 2021).

Prospective international audits on airway management during anaesthesia are currently lacking. Moreover, airway management in anaesthesia has been traditionally defined as potentially anatomically difficult in contrast to airway management of critically ill patients, whose physiology alterations, such as shock or respiratory

failure, add complexity (physiologically difficult airways) and increased risk of peri-intubation adverse events.

With increased scheduled procedures involving older and frail patients, the incidence of peri-intubation hypotension and desaturation may be of clinical relevance. Moreover, despite the availability of guidelines, we expect a significant heterogeneity

of practice across different geographical areas as the result of different availability of human and economic resources and traditional approaches to airway management in different centres.

We hope that STARGATE study will provide useful data to further increase the safety of airway management in the anaesthesia setting.

For more information about the STARGATE study and if you want to participate as a centre, please visit the study website: www.stargatestudy.com

Conflict of Interest

None. ■

References

- Bellani G, Laffey JG, Pham T et al. (2016) Epidemiology, Patterns of Care, and Mortality for Patients With Acute Respiratory Distress Syndrome in Intensive Care Units in 50 Countries. *JAMA*. 315(8):788-800.
- Cook TM, Woodall N, Frerk C (2011) Major complications of airway management in the U.K.: results of the Fourth National Audit Project of the Royal College of Anaesthetists and the Difficult Airway Society. Part 1: Anaesthesia. *Br J Anaesth*. 106(5):617-31.
- Russotto V, Myatra SM, Laffey JG et al. (2021) Intubation Practices and Adverse Peri-intubation Events in Critically Ill Patients From 29 Countries. *JAMA*. 325(12):1164-1172.
- Russotto V, Tassistro E, Myatra SM et al. (2022) Peri-intubation Cardiovascular Collapse in Patients Who Are Critically Ill: Insights from the INTUBE Study. *Am J Respir Crit Care Med*. 206(4):449-458.



Jesús Salvador Sánchez-Díaz

Intensive Care Unit
Hospital de Especialidades
No. 14
IMSS UMAE
Veracruz, Mexico
drsalvadorsanchezdiaz@gmail.com
@JesusSanchez148



Karla Gabriela Peniche-Moguel

Intensive Care Unit
Hospital de Especialidades
No. 14
IMSS UMAE
Veracruz, Mexico
gabrielapenichemd@gmail.com



Juan Miguel Terán-Soto

Department of Anaesthesiology
Hospital Regional "Dr. Luis F. Nachón" Xalapa
Veracruz, Mexico
miguel_terania89@gmail.com



Enrique Antonio Martínez-Rodríguez

Department of Anaesthesiology
ABC Medical Center
Mexico City, Mexico
enrique_timc@hotmail.com



Fernando Jaziel López-Pérez

Department of Emergency Medicine
Hospital General de Zona No. 1 Saltillo
Coahuila, Mexico
jaziel_lp@hotmail.com

Medical Errors in the Preanalytical Phase of Blood Gases Test

The preanalytical phase of the blood gases study is the most susceptible to errors, causing increased time and costs for patients and hospitals. Knowledge and training of the involved health personnel must be constant to improve results.

Introduction

Arterial or venous blood gases test is a frequent tool in the Intensive Care Unit (ICU) commonly used for the respiratory system evaluation during respiratory failure and mechanical ventilation, the study of the acid-base status, or even macro- or micro-haemodynamic monitoring. However, it has been shown that up to 40% of blood gas analyses are in error during the procedure, and 4% of samples are analysed after 30 minutes of being obtained (Wooley et al. 2003). These errors can be ignored and go unnoticed, resulting in inadequate diagnoses and treatments (Davis et al. 2013). The study of blood gases can be divided into three phases of its analytical procedure: 1) the preanalytical phase, in which the supplies (syringe, heparin, antiseptics, etc.) are prepared, the sample is obtained and transported to the blood gas analyser; 2) the analytical phase, which corresponds to the blood gas analyser and includes the analytical processing itself, and 3) the post-analytical phase or interpretation of results by the clinician. Each phase presents errors, but they occur more frequently in the preanalytical phase, probably because it is the least automated and involves more personnel from different areas (Baird 2013). Blood gas analyses are an excellent tool for clinically evaluating critically ill patients, but the interpretation and decision-making based on erroneous results could be worse than not conducting them (Sánchez-Díaz et al. 2020).

Phases of the Analytical Procedure of Blood Gases Test

All the activity conducted in the laboratory is divided into three phases that are perfectly well-identified and delimited but closely related to each other. The analytical process of the blood gases study is divided into the following:

1. Preanalytical phase
2. Analytical phase
3. Postanalytical phase

The majority of so-called laboratory errors usually occur outside the laboratory and are defined as "any defect from ordering tests to reporting and interpretation of results". Of all the errors that occur in the analytical procedure of laboratory studies, up to 75% correspond to the preanalytical phase, 4% to the analytical phase, and 21% to the post-analytical phase (Kulkarni et al. 2020). The percentage difference of each phase is related to the number of manual or automated processes, the number and type of personnel involved, the external and internal quality controls, and the training to conduct all the processes (Sonntag 2009). Recently, through a measuring score applied to 54 undergraduate medical interns and first-year resident physicians, the knowledge of pre- and post-analytical phases of blood gases was assessed. It was documented that none of the participants had the level of knowledge necessary to solve various clinical situations (Ojeda Bello et al. 2020). On the other hand, laboratory errors, mainly in the preanalytical phase, increase the resources and costs necessary

for hospital care, accounting for about 2% of the hospital's total operating costs. In addition, the hours lost due to these errors are approximately 24,027 a year (Green 2013).

Preanalytical Phase

The preanalytical phase is characterised by having four steps, each one prone to various errors due to its apparent obviousness:

1. Previous preparation
2. Sampling
3. Sample storage
4. Sample transport

Step 1. Previous Preparation

It is the step where more mistakes are made and, therefore, where more could be avoided. The first one is due to the type of syringe used. The main difference between glass and plastic is the permeability (which is higher in plastic) to gases (oxygen and carbon dioxide) that increases with low temperature (Rodriguez Fraga et al. 2019). It is recommended to use pre-heparinised plastic syringes (dried calcium-balanced lithium heparin), which reduces the risk of sample dilution and chelation. In hospitals with limited resources, pre-heparinised syringes are not always available, so insulin syringes soaked in liquid sodium heparin are used. However, too much heparin can cause sample dilution (e.g., low haematocrit, no clinical correlation) and chelation (low ionised calcium, no clinical correlation), which translates into altered gasometric variables. Suspicion and lack of clinical correlation are always decisive in the assessment of blood gases. The recommendation is to use 8 to 12 IU or 0.012 to 0.04 ml of liquid sodium heparin per ml of blood. Consequently, in this context, this is impractical (WHO 2010). The implication of the needle diameter should not be overlooked since the smaller the diameter, the greater the haemolysis. This would be reflected in increased serum levels of potassium, magnesium, iron, etc. It is recommended to use needles of ≤ 25 gauge (G) or ≥ 0.5 mm diameter; these are inversely related, i.e., the smaller the gauge, the larger the diameter. Likewise, avoid puncturing a haematoma, let the

alcohol used for antiseptics evaporate, avoid transferring the sample, or draw it from a blood test tube (Fang et al. 2008; Ogiso et al. 1983).

Step 2. Sampling

You can always consider a peripheral venous blood gas analysis, which is increasingly used. In this case, consider needles < 25 G in diameter, use a tourniquet for less than 60 seconds, let the antiseptic evaporate, draw the blood slowly, do not puncture through any haematoma, mix the sample gently, and preferably use syringes prefilled with dried calcium-balanced lithium heparin. The peripheral puncture can be obtained from any site, although it is preferred from the antecubital fossa. It is recommended to compress the puncture site after taking the sample for one minute (Kelly 2010; Schütz et al. 2019).

Regarding arterial blood sampling, initially assess collateral blood flow using the Allen test. The radial artery is the most used site for puncture due to its adequate collateral circulation through the ulnar artery. The same considerations as for peripheral venous blood gas analysis

should be taken, except that there is no need for a tourniquet, and the compression of the puncture site will be for at least five minutes (WHO 2010).

Finally, the changes that occur in the variables measured in the blood gas analyser with respect to the amount of sample, from 3 to 1 ml, are not greater than 15%, so it is considered that the blood sample should not be less than 1 ml (Hedberg et al. 2009).

Step 3. Sample Storage

In this step, we start with the following key tips: do not store the sample, do not refrigerate it, and process it as soon as possible, preferably within 30 minutes (Montero Salinas et al. 2021). Remember that plastic syringes increase their permeability to gases (oxygen and carbon dioxide) at low temperatures, altering the values measured in the sample (Rodriguez Fraga et al. 2019). Another important and frequent problem is the presence of air bubbles inside the blood sample. Before the next step, they must be removed by homogenising the sample by rubbing gently and preferably within the first three

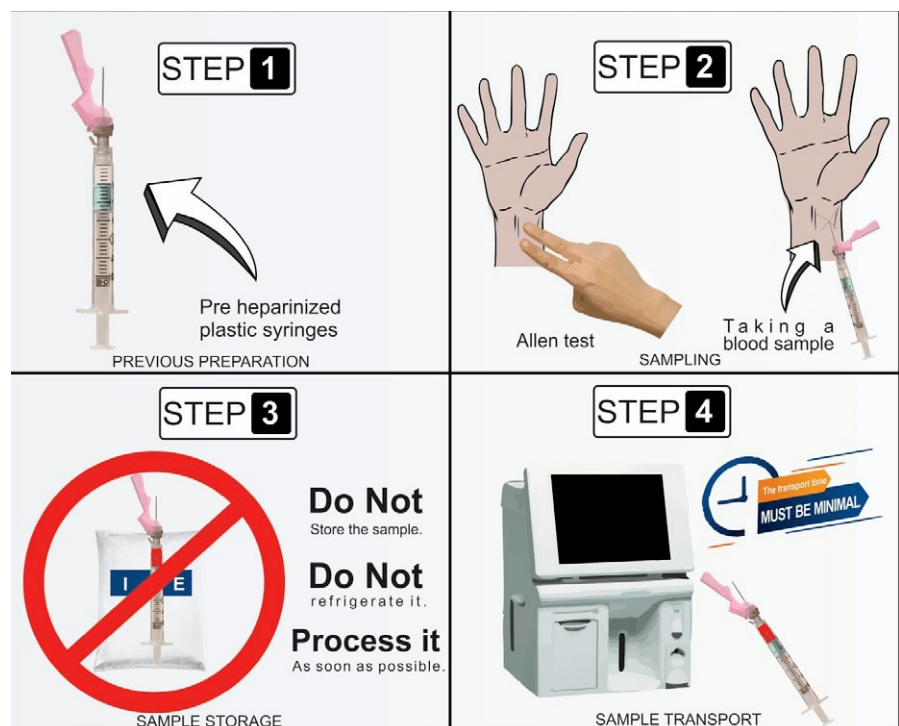


Figure 1. Considerations in the four steps of preanalytical phase of blood gases test

minutes of obtaining the blood sample (Mohammadhoseini et al. 2015).

Step 4. Sample Transport

In a whole blood sample, aerobic metabolism can be maintained for a period of 15 to 30 minutes, after which the amount of oxygen and glucose will be depleted, altering the results. The transport time must be minimal so that these metabolic changes are minor. Transport can be manual (by health personnel) or automated (pneumatic tube). The first is the most used and acceptable. The second increases the incidence of haemolysis and the levels of oxygen partial pressure. The difference lies in the fact that manual transport has a universal gravitational constant (G) of 2G and the pneumatic tube transport of 15G, favouring these changes (Baird 2013).

Approximately 40 to 80 ml of blood are used daily for diagnostic purposes, equivalent to one unit of packed red blood cells every 7 to 10 days (López et al. 2018).

The study of blood gases continues to be one of the most requested diagnostic studies in hospitals. Therefore, it is highly necessary that all health personnel involved master perfectly the four steps of the preanalytical phase to guarantee that the patient receives appropriate diagnoses and treatments (Baird 2013) (**Figure 1**). Although this procedure is considered safe with minimal risk, understanding the preanalytical phase would minimise complications such as unnecessary pain, bruising, vessel puncture site thrombosis, vascular or nerve injury, and infections (Castro 2022).

Conclusion

The preanalytical phase of the blood gases study is the most susceptible to errors, causing increased time and costs for patients and hospitals. These errors cause discomfort, complications, wrong diagnoses, or wrong therapeutic actions in patients. Knowledge and training of the involved health personnel must be constant to improve results. It should always be considered if a blood gas analysis is really necessary, so it is not performed routinely. Clinical suspicion is essential to detect errors; if the sample does not match the clinical characteristics of the patient, we advise you to obtain a new and better sample before making any decision.

Conflict of Interest

None. ■

References

- Baird G [2013] Preanalytical considerations in blood gases analysis. *Biochem Med (Zagreb)*. 23:19-27.
- Castro D, Patil SM, Keenaghan M [2022] Arterial Blood Gas. In: StatPearls [Internet]. Treasure Island (FL): StatPearls Publishing.
- Davis MS, Walsh BK, Sitting SE, Restrepo RD [2013] AARC clinical practice guideline: blood gas analysis and hemoximetry: 2013. *Respir Care*. 1694-1703.
- Fang L, Fang SH, Chung YH, Chien ST [2008] Collecting factors related to the haemolysis of blood specimens. *J Clin Nurs*. 17(17):2343-51.
- Green SF [2013] The cost of poor blood specimen quality and errors in preanalytical processes. *Clin Biochem*. 46(13-14):1175-9.
- Hedberg P, Majava A, Kiviluoma K, Ohtonen P [2009] Potential preanalytical errors in whole-blood analysis: effect of syringe sample volume on blood gas, electrolyte and lactate values. *Scand J Clin Lab Invest*. 69(5):585-91.
- Kelly AM [2010] Review article: Can venous blood gas analysis replace arterial in emergency medical care. *Emerg Med Australas*. 22(6):493-8.
- Kulkarni S, Piraino D, Strauss R et al. [2020] The Cost of Preanalytical Errors in INR Testing at a Tertiary-Care Hospital Laboratory: Potential for Significant Cost Savings. *Laboratory Medicine*. 51(3):320-324.
- López A, García B, Gómez A et al. [2019] Concordance of the ions and GAP anion obtained by gasometry vs standard laboratory in critical care. *Med Intensiva (Engl Ed)*. 43(9):521-527.
- Mohammadhoseini E, Safavi E, Seifi S et al. [2015] Effect of Sample Storage Temperature and Time Delay on Blood Gases, Bicarbonate and pH in Human Arterial Blood Samples. *Iran Red Crescent Med J*. 17(3):e13577.
- Montero Salinas A, Pérez Ramos M, Toba Alonso F et al. [2021] Analysis of Arterial Blood Gas Values Based on Storage Time Since Sampling: An Observational Study. *Nurs Rep*. 11(3):517-521.
- NCCLS [2003] Procedures for the collection of diagnostic blood specimens by venipuncture; approved standard. H3-A5. 5th Ed.
- Ogiso T, Iwaki M, Yamamoto M [1983] Hemolysis induced by benzyl alcohol and effect of the alcohol on erythrocyte membrane. *Chem Pharm Bull (Tokyo)*. 31(7):2404-15.
- Ojeda Bello JA, Cruz López C, Menéndez Acuna EP et al. [2020] Conocimiento de la fase preanalítica y postanalítica de la gasometría arterial en médicos residentes e internos. *Educ Med*.
- Rodríguez Fraga O, Navarro Segarra X, Galán Ortega A et al. [2019] Recomendaciones preanalíticas para la medición del equilibrio ácido-base y los gases en sangre. *Rev Lab Clin* 12(4):e66-e74.
- Sánchez Díaz JS, Peniche Moguel KG, Rivera Solís G et al. [2020] Hemodynamic monitoring with two blood gases: a tool that does not go out of style. *Colomb. J. Anesthesiol*. 49(1).
- Schütz N, Roth D, Schwameis M et al. [2019] Can Venous Blood Gas Be Used as an Alternative to Arterial Blood Gas in Intubated Patients at Admission to the Emergency Department? A Retrospective Study. *Open Access Emerg Med*. 11:305-312.
- Sonntag O [2009] Analytical interferences and analytical quality. *Clin Chim Acta*. 404(1):37-40.
- Woolley A, Hickling K [2003] Errors in measuring blood gases in the intensive care unit: effect of delay in estimation. *J Crit Care*. 18(1):31-7.
- WHO [2002] Use of anticoagulants in diagnostic laboratory investigations, WHO/DIL/LAB/99.1 Rev 2.
- WHO Guidelines on Drawing Blood: Best Practices in Phlebotomy. Geneva: World Health Organization [2010] 5, Arterial blood sampling. Available at <https://www.ncbi.nlm.nih.gov/books/NBK138661/>

MAY

31-2 JUN 9th World Congress of the ERAS® Society 2023
Lisbon, Portugal
<https://iii.hm/1kvk>

JUNE

3-5 Euroanaesthesia 2023
Glasgow, Scotland
<https://iii.hm/1kvl>

9-11 6th EuroAsia Conference
Mumbai, India
<https://iii.hm/1kvm>

12-14 41st Vicenza Course on AKI & CRRT
Vicenza, Italy
<https://iii.hm/1kvn>

14-16 Critical Care Reviews Meeting 2023
Belfast, United Kingdom
<https://iii.hm/1kvo>

14-16 Reanimation 2023
Paris, France
<https://iii.hm/1kvp>

22-24 LIVES Forum 2023: Heart, Lungs and their cross-talk
Utrecht, The Netherlands
<https://iii.hm/1kvq>

27-29 SOA23 Congress
Birmingham, United Kingdom
<https://iii.hm/1kvr>

AUGUST

26-30 WICC 2023- 16th World Intensive and Critical Care Congress
Istanbul, Turkey
<https://iii.hm/1kvs>

SEPTEMBER

6-9 6th World Congress on Regional Anesthesia & Pain Medicine (Joined Meeting with ESRA Annual Congress) 2023
Paris, France
<https://iii.hm/1kvt>

9-13 ERS International Congress 2023 - European Respiratory Society
Milan, Italy
<https://iii.hm/1kvu>

11-12 British Association of Critical Care Nurses (BACCN) Conference 2023
Nottingham, United Kingdom
<https://iii.hm/1kva>

13-15 Association of Anaesthetists Annual Congress 2023
Edinburgh, Scotland
<https://iii.hm/1kvx>

20-22 SFAR Annual Congress 2023
Paris, France
<https://iii.hm/1kvy>

28-30 ESPA- 13th European Congress for Paediatric Anaesthesiology
Prague, Czech Republic
<https://iii.hm/1kvz>

EDITOR-IN CHIEF

Prof Jean-Louis Vincent, Consultant, Department of Intensive Care, Erasme Hospital, Free University of Brussels, Belgium

jlvincent@intensive.org

EDITORIAL BOARD

Prof Antonio Artigas (Spain)
Prof Jan Bakker (The Netherlands)
Prof Richard Beale (United Kingdom)
Prof Jan de Waele (Belgium)
Prof Bin Du (China)
Prof Hans Flaatten (Norway)
Prof Armand Girbes (Netherlands)
Prof Theodoros Kyprianou (Cyprus)
Prof Jeff Lipman (Australia)
Prof Flavia Machado (Brazil)
Prof John Marini (United States)
Prof Paul E. Pepe (United States)
Prof Paolo Pelosi (Italy)
Dr Shirish Prayag (India)
Dr Emma J. Ridley (Australia)
Prof Gordon Rubenfeld (Canada)
Dr Francesca Rubulotta

aartigas@cpsp.es
jan.bakker@erasmusmc.nl
richard.beale@gstt.sthames.nhs.uk
jan.dewaete@ugent.be
dubin98@gmail.com
hans.flaatten@helse-bergen.no
arj.girbes@vumc.nl
tkyprian@gmail.com
j.lipman@uq.edu.au
frmachado@unifesp.br
john.j.marini@healthpartners.com
paul.pepe@utsouthwestern.edu
ppelosi@hotmail.com
shirishprayag@gmail.com
emma.ridley@monash.edu
gordon.rubenfeld@sunnybrook.ca
francesca.rubulotta@nhs.net

REGIONAL AMBASSADORS

Dr Adrian Wong, UK
Dr Audrey de Jong, France

avkwong@mac.com
a-de_jong@chu-montpellier.fr

GUEST AUTHORS

Heather Baid, Matthieu Bernat, Pietro Caironi, Francesca Collino, Daniela Cuéllar-Mendoza, Ernesto Delyo-Tomas, Jan Carel Diehl, Marco Francesconi, Irene Salinas Gabiña, Diederik Gommers, Emmanuelle Hammad, Nicole Hunfeld, Marc Leone, Fernando Jaziel López-Pérez, Sonia Pajares Martínez, Enrique Antonio Martínez-Rodríguez, Lourdes M Méndez-Martínez, Massimo Muraccini, Martien Ostermann, Jack Parry-Jones, Karla Gabriela Peniche-Moguel, Orlando R. Pérez-Nieto, Vincenzo Rusotto, Chiara Sansovini, Cristian U Santillán-Ramírez, Jesús Salvador Sánchez-Díaz, Juan Miguel Terán-Soto, Sophie Van Der Zee, Erik M van Raaij, Federico Gordo Vidal, Jean-Louis Vincent, Eder I. Zamarrón-López, Laurent Zieleskiewicz

EXECUTIVE DIRECTOR

Christian Marolt

c@icu-management.org

VP CLIENT SERVICE

Katya Mitreva
Hilde Geuens

k.m@icu-management.org
h.g@icu-management.org

MANAGING EDITOR

Samna Ghani

editorial@icu-management.org

VP MARCOM

Anastazia Anastasiou

marcom@icu-management.org

COMMUNICATIONS TEAM

Tania Farooq
Mahjabeen Ahmed

gdpr@mindbyte.eu
office@mindbyte.eu

GRAPHIC DESIGNER

Evi Hadjichrysostomou

art2@mindbyte.eu

AUDIO-VISUAL

Andreas Kariofillis

studio@mindbyte.eu

ICU MANAGEMENT AND PRACTICE IS PUBLISHED BY

MindByte Communications Ltd
Kosta Ourani, 5 Petoussis Court, 5th floor, CY-3085 Limassol Cyprus
Email
Website

office@icu-management.org
icu-management.org

SUBSCRIPTION RATES

One year
Two years

55 Euros + 5% VAT if applicable
90 Euros + 5% VAT if applicable

Note: For a free digital subscription please contact Samna Ghani, editorial@icu-management.org

PRODUCTION, FULFILMENT AND DISTRIBUTION

Total distribution: 21,500
ISSN = 1377-7564

© ICU Management & Practice is published five times per year. The publisher is to be notified of cancellations six weeks before the end of the subscription. The reproduction of (parts of) articles without consent of the publisher is prohibited. The publisher does not accept liability for unsolicited materials. The publisher retains the right to republish all contributions and submitted material via the Internet and other media.

LEGAL DISCLAIMER



The Publishers, Editor-in-Chief, Editorial Board, Correspondents and Editors make every effort to see that no inaccurate or misleading data, opinion or statement appears in this publication. All data and opinions appearing in the articles and advertisements herein are the sole responsibility of the contributor or advertiser concerned. Therefore the publishers, Editor-in-Chief, Editorial Board, Correspondents, Editors and their respective employees accept no liability whatsoever for the consequences of any such inaccurate or misleading data, opinion or statement.

VERIFIED CIRCULATION

according to the standards of International Business Press Audits.

ICU Management & Practice is independently audited by Top Pro CY.

WHAT'S COMING NEXT?



COVER STORY: Artificial Intelligence in the ICU

The intensive care unit handles some of the most complex clinical situations. In this issue, our contributors discuss the benefits of AI and technology and how advanced tools and systems can enable critical care clinicians to manage the complex demands of care, have access to insightful data, streamline workflows, reduce their cognitive workload and give more time to patients.



COVER STORY: Patients and Families

There has been an increased focus on ensuring patient and family engagement in critical care. In this issue, our contributors discuss strategies for clinicians to work with patients and families, rationale for patient and family engagement, opportunities to strengthen this engagement, and promoting greater patient and family involvement.

FOR SUBMISSIONS CONTACT

editorial@icu-management.org



ICU

MANAGEMENT & PRACTICE

